

Gene array of VHL mutation and hypoxia shows novel hypoxia-induced genes and that cyclin D1 is a VHL target gene

CC Wykoff^{1,4}, C Sotiriou^{2,4}, ME Cockman³, PJ Ratcliffe³, P Maxwell³, E Liu² and AL Harris^{*,1}

¹Molecular Oncology Laboratories, John Radcliffe Hospital, Weatherall Institute of Molecular Medicine, Cancer Research UK, Oxford OX3 9DS, UK;

²Division of Clinical Sciences, National Cancer Institute, USA; ³Wellcome Trust Center for Human Genetics, Oxford OX3 7BN, UK

Gene expression analysis was performed on a human renal cancer cell line (786-0) with mutated VHL gene and a transfectant with wild-type VHL to analyse genes regulated by VHL and to compare with the gene programme regulated by hypoxia. There was a highly significant concordance of the global gene response to hypoxia and genes suppressed by VHL. Cyclin D1 was the most highly inducible transcript and 14-3-3 epsilon was downregulated. There were some genes regulated by VHL but not hypoxia in the renal cell line, suggesting a VHL role independent of hypoxia. However in nonrenal cell lines they were hypoxia regulated. These included several new pathways regulated by hypoxia, including RNase 6PL, collagen type I alpha 1, integrin alpha 5, ferritin light polypeptide, JM4 protein, transgelin and LI cell adhesion molecule. These were not found in a recent SAGE analysis of the same cell line. Hypoxia induced downregulation of Cyclin D1 in nonrenal cells via an HIF independent pathway. The selective regulation of Cyclin D1 by hypoxia in renal cells may therefore contribute to the tissue selectivity of VHL mutation.

British Journal of Cancer (2004) **90**, 1235–1243. doi:10.1038/sj.bjc.6601657 www.bjcancer.com

Published online 24 February 2004

© 2004 Cancer Research UK

Keywords: VHL; hypoxia; cyclin D1; hypoxia inducible factor1; renal

Germline mutations in the von Hippel-Lindau (*VHL*) tumour suppressor gene are associated with a dominantly inherited renal cancer syndrome (Latif *et al*, 1993; Chen *et al*, 1995) and sporadic renal cancer. The *VHL* gene product pVHL is a critical component of a multiprotein ubiquitin ligase complex that targets the regulatory HIF- α subunits of hypoxia-inducible factor 1 (HIF-1) for oxygen-dependent proteolysis (Iwai *et al*, 1999; Maxwell *et al*, 1999; Cockman *et al*, 2000; Ivan *et al*, 2001). HIF-1 is expressed in response to hypoxia in most cell types and activates the transcription of genes involved in a variety of physiological and cellular processes including vascular endothelial growth factor (VEGF), glucose transport (glucose transporters), glycolysis (glycolytic enzymes), and cell survival (insulin-like growth factor 2) (Semenza, 1999). pVHL defective cells, both in cell culture and in the context of human tumours, constitutively overexpress HIF-1 target genes irrespective of their environmental oxygen concentration (Iliopoulos *et al*, 1996), due to the constitutive stabilisation of HIF- α subunits (Maxwell *et al*, 1999).

While a clear role of HIF-1 in producing vascularisation of tumours has emerged, the role of HIF activation in oncogenesis is still poorly defined. In particular, the mechanisms for tissue specificity of the effects of VHL mutation are unknown. Recently, we and others have identified a number of new pVHL target genes and demonstrated that many of these were hypoxia-responsive in wild-type pVHL cell lines (Koong *et al*, 2000; Wykoff *et al*, 2000;

Lal *et al*, 2001). Whether there are other hypoxia non-VHL regulated pathways in renal cell lines is unknown.

Therefore in the current study, we have analysed a pair of renal cell carcinoma transfectants that are either defective or competent for pVHL to mRNA expression profiling. We have examined not only the pattern of gene expression affected by pVHL status but also that affected by hypoxia in both the absence and presence of a functional *VHL* gene product. The analysis shows that there was a strong relation between genes regulated by hypoxia and those regulated by VHL. There were no genes regulated by hypoxia independently of VHL, but there were genes regulated by VHL that were not hypoxia regulated in the renal cell line used for the study. The unexpectedly high concordance prompted us to analyse hypoxia regulation of genes in the latter class in other cell types, and also genes from our previous study of VHL regulated genes in a different renal cell type (Wykoff *et al*, 2000), which were VHL but not hypoxia responsive. These genes were clearly regulated by hypoxia in other nonrenal cell types.

Cyclin D1 was identified as the most highly inducible gene in the array and in contrast to all other cell lines and studies reported, was upregulated by hypoxia not downregulated. Additionally, 14-3-3 epsilon was downregulated providing a combined modulation of G1 and G2 checkpoints. The tissue selectivity of VHL transformation in renal cancer may be related to the tissue-specific direction of regulation of this key checkpoint by hypoxia.

MATERIALS AND METHODS

Cell lines

786-0 cells expressing pVHL or empty vector were a gift from WG Kaelin. RCC lines were as described (Maxwell *et al*, 1999). RCC4/

*Correspondence: Dr AL Harris; E-mail: aharris.lab@cancer.org.uk

⁴Wykoff and Sotiriou contributed equally to this paper.

Received 2 September 2003; revised 30 December 2003; accepted 5 January 2004; published online 24 February 2004

iVHL-HA (C1.2) and RCC4/iVA (VA1) are human renal cancer cell lines with mutant VHL, the former transfected with an HA tagged wild-type VHL, the latter the empty vector control. A549, EJ28, HBL-100, and ZR-75-1 lines were from ATCC. Embryonic stem cells with deleted HIF-1 alpha or HIF-2 alpha were generously provided by P Carmeliet. Cells were grown in DMEM (Sigma) supplemented with 10% foetal calf serum (GlobePharm), L-glutamine (2 mM), penicillin (100 $\mu\text{g ml}^{-1}$), and streptomycin sulphate (100 U ml^{-1}). Studies of inducible gene expression were performed on cells approaching confluence. Hypoxic conditions were generated in a Napco 7001 incubator (Precision Scientific) with 0.1% O₂, 5% CO₂, and balance N₂, for 16 h.

Preparation and hybridisation of fluorescent labelled cDNA

One round Eberwine's *et al* (1992) RNA amplification procedure with minor modifications was performed using polyA RNA from 786-0 RCC cancer cell line under different conditions. This methodology is similar to that employed by Affymetrix, Inc. for the production of probe in their chip microarray expression analysis.

The cDNA probes were prepared from antisense RNA. Briefly, we used 3 μg of antisense RNA for Cy3 and Cy5 labelling. After probe purification the two separated probes were combined, mixed with hybridisation solution, denatured, and hybridised onto a 6000-feature cDNA microarray in a humidified chamber at 65°C for 16 h. The slides were then rinsed by submersion and agitation for 2 min in 2 \times SSC with 0.1% SDS, followed by 1 \times SSC, 0.2 \times SSC, and 0.05 \times SSC and then dried.

Scanning and data processing

Following hybridisation, microarrays were scanned using a 10 μm resolution GenePix 4000 scanner (Axon Instruments, Inc., Foster City, CA, USA) at variable PMT (photo-multiplier tube) voltage to obtain maximal signal intensity with <1% probe saturation. Resulting TIFF images for each fluorescent were analysed with GenePix software version 3.0 (Axon Instruments, Inc., Foster City, CA, USA). The data files generated by GenePix v3.0 were entered into a web-based database maintained by the Bioinformatics and Molecular Analysis Section of the CIT (Center for Information Technology), National Cancer Institute, Bethesda, MD, USA.

To study the gene expression profiles, an average linkage hierarchical cluster analysis utilising a correlation metric of similarity for clustering genes was performed as described by Eisen *et al* (1998). A metric multidimensional scaling for analysing and visualising the correlation among expression profiles of samples was also performed (Tenenbaum *et al*, 2000). To exclude labelling biases, antisense RNA-based targets from either cell line were labelled with the reciprocal fluorochrome in every other duplicate experiment. Differentially expressed genes were designated significant if they were reproducibly induced by >2-fold in three out of four experiments for each screening.

Ribonuclease protection assay (RPA)

Total RNA was extracted by a modified acid/guanidinium thiocyanate/phenol/chloroform method (RNAzol B, Cinna/Biotec Laboratories), and dissolved in hybridisation buffer (80% formamide, 40 mM PIPES, 400 mM sodium chloride, and 1 mM EDTA, pH 8). For details of riboprobe templates employed to examine the expression of previously described VHL-responsive genes, see Wykoff *et al* (2000). Quantification of the protected species from 30 μg was performed using a phosphoimager (Molecular Dynamics), and related to an internal control assay for the constitutively expressed U6 small nuclear RNA (LC), performed for each assay as described (Maxwell *et al*, 1999).

Cell lysis and immunoblotting

Whole-cell protein extracts were prepared from tumours by section of frozen tissue and 30 s homogenisation in denaturing conditions as described (Wiesener *et al*, 1998). For Immunoblot analysis, aliquots were separated by SDS-polyacrylamide gel electrophoresis and transferred onto Immobilon-P membranes. Cyclin D1 was detected using the mouse monoclonal anti-human cyclin D1 mouse monoclonal Ab MCA1756 (Serotec, UK) (1 : 1000) at 4°C for 16 h. HRP-conjugated goat-anti-mouse immunoglobulin (DAKO) (1 : 1000) was applied for 1 h at room temperature (RT). ECL Plus (Amersham Pharmacia) was used for visualisation.

RESULTS

Comparison of VHL-responsive and hypoxia-responsive genes on gene array

Comparing VHL-deficient 786-0 cell line expressing vector backbone alone (786-0) or wild-type human VHL (786-0/VHL), 28 genes were repressed and 29 genes were induced by stable transfection of VHL (Table 1). As anticipated, some of the VHL-repressible genes were previously identified VHL-targets, including endothelin 1 (EDN1) and transforming growth factor alpha (TGFA). In 786-0/VHL, 11 genes were induced and nine genes were repressed by hypoxia (Table 2).

A striking concordance in the pattern of gene regulation across the entire screen was observed when the VHL-responsive genes were compared to the hypoxia-responsive genes in 786-0/VHL (Figure 1). VHL-repressible genes (represented with reds of various intensities in the left column) were typically hypoxia-inducible in 786-0/VHL (red in middle column). A similar response was seen with VHL-inducible genes, which were hypoxia repressible (represented with greens of various intensities in the left column).

In comparison to the changes in gene expression induced by changes in VHL-status and hypoxia in 786-0/VHL, strikingly few changes in gene expression were observed in 786-0 in response to hypoxia. Three genes were significantly induced by hypoxia in 786-0, two of which, TGFA and uridine diphosphoglucose pyrophosphorylase (UGP2), were also identified as hypoxia-inducible in 786-0/VHL. Array screening identified 10 genes that were repressed by hypoxia in 786-0 (Table 3)

RNase protection analysis of candidate VHL-responsive and hypoxia-responsive genes

RNase protection assays (RPA) were used to validate the findings. Nine of the identified VHL-responsive genes predicted by array screening to be either downregulated (cyclin D1 (CCND1), ribonuclease 6 precursor (RNASE6PL), hypothetical protein DKFZp434K1210 (HP), TGFA, cytochrome *c* (HCS), and cytochrome P450 subfamily IIB polypeptide 6 (CYP2B)), or upregulated (prostate differentiation factor (PLAB), fibronectin (FN1), and 14-3-3 epsilon (YWHAE)) by reintroduction of VHL into 786-0 were examined by RPA (Figure 2A(a) and (b) respectively, comparing the paired cell lines in normoxia). Seven of these genes were clearly confirmed to be regulated as predicted by array screening, while one did not show regulation (HCS) and one was not expressed at detectable levels by RPA (CYP2B).

Five of these predicted VHL-responsive genes were also predicted by the array analysis to be regulated by hypoxia in 786-0/VHL. As illustrated in Figure 2A, each of these genes were confirmed to be either upregulated (CCND1, RNASE6PL, HP, TGFA) or downregulated (PLAB) by hypoxia in 786-0/VHL.

Therefore, each analysed gene predicted by array screening to be regulated both by VHL-status and by hypoxia in 786-0/VHL was

Table 1 Candidate VHL-responsive genes in the 786-0

IMAGE ID	Abbreviation	Gene	Fold Reg VHL-/-VHL+	Fold Reg H/N
841641	CCND1	Cyclin D1	4.2	4.6
248828	ID3	Inhibitor of DNA binding 3	4	NS
756372	RARRES2	Retinoic acid receptor responder 2	4	NS
345032	RNASE6PL	Ribonuclease 6 precursor	3.8	3.3
1407750	IGFBP3	Insulin-like growth factor-binding protein-3	3.6	3.3
47359	EDN1	Endothelin 1	3.4	2
726086	TFPI2	Tissue factor pathway inhibitor 2	3.4	NS
346545	LAMBI	Laminin, beta 1	3.4	NS
110467	CAV2	Caveolin 2	3.3	NS
755506	ANXA4	Annexin A4	3.2	NS
156520	TNFAIP6	Tumour necrosis factor, alpha-induced protein 6 = TSG-6	2.9	NS
272942	HP = DKFZp434K121	Hypothetical protein dkfzp434k121	2.9	3.7
40017	HCS	Cytochrome c	2.8	NS
163189	CD24	CD24	2.8	NS
272185	RPL27	Ribosomal protein L27	2.8	NS
325822	TGFA	Transforming growth factor, alpha	2.6	2.8
298268	BTG1	B-cell translocation gene 1	2.6	NS
279085	MYO9B	Myosin-IXB	2.6	NS
324873	ID2	Inhibitor of DNA binding 2	2.5	NS
230218	GCN5L1	General control of amino-acid synthesis (yeast) homolog-like 1	2.5	NS
83231	CYP2B	Cytochrome P450, subfamily IIB, polypeptide 6	2.5	NS
855624	ALDH1	Aldehyde dehydrogenase 1	2.5	NS
343990	LOC51226	COPZ2 = nonclathrin coat protein zeta-COP	2.4	NS
725454	CKS2	Cyclin -dependent kinase regulatory subunit 2	2.3	NS
139681	NNAT	Neuronatin	2.3	NS
287327	IGF1	Insulin-like growth factor 1	2.3	NS
291057	CDKN2C	p18-(INK6) = cyclin-dependent kinase 6 inhibitor	2.2	NS
364934	DAPK1	Death-associated protein kinase 1	2	NS
142788	SERPINH2	CBP2 = collagen binding protein-2 = serine protease inhibitor, clade H, 2	0.16	NS
309482	MAPK12	Mitogen activated protein (MAP) kinase 12	0.18	NS
139009	FN1	Fibronectin	0.26	NS
504763	SDC4	Syndecan-4	0.27	0.49
82734	FACL2	Fatty-acid-coenzyme A ligase, long-chain 2	0.30	0.5
491066	ACVR1	Activin A receptor, type 1 = serine/threonine protein kinase receptor R1	0.31	NS
266106	YWHAE	14-3-3 epsilon	0.32	NS
325160	NP25	Neuronal protein 25	0.33	NS
785415	LOC51763	SKIP = skeletal muscle and kidney enriched inositol phosphatase	0.34	NS
841059	CAPG	Capping protein (actin filament), gelsolin-like	0.36	NS
198904	APMCF1	APMCF1 protein	0.37	NS
489212	PDHA1	Pyruvate dehydrogenase alpha subunit	0.37	NS
825442	PTP4A2	Protein tyrosine phosphatase type IVA member 2	0.38	NS
769959	COL4A2	Collagen, type IV, alpha 2	0.38	NS
549383	PLAB	Prostate differentiation factor = MIC-1 = macrophage inhibitory cytokine-1	0.38	0.43
384078	ATP6D	ATPase, H+ transporting, lysosomal (vacuolar proton pump), member D	0.38	NS
840844	HSPA5	GRP78 = 78 kDa glucose regulated protein precursor	0.40	NS
489453	SRM300	EST:KIAA0324	0.41	NS
588829	AARS	UG5 alanyl-tRNA synthetase	0.41	NS
193913	LYN	Tyrosine kinase	0.41	NS
136744	SPOP	Speckle-type, poxvirus and zinc-finger domain (POZ) containing, protein	0.42	NS
897177	PGAM1	Phosphoglycerate mutase 1 (brain)	0.42	NS
324437	GRO1	MGSA = melanoma growth stimulatory activity	0.42	NS
868304	ACTA2	Actin, alpha 2	0.43	NS
307553	KRAS2	v-Ki-ras2 Kirsten rat sarcoma 2 viral oncogene homolog	0.45	NS
810213	IL1R1	Interleukin-1 receptor, type 1	0.46	0.45
742132	ISG15	Interferon-induced 17kDa protein	0.47	NS
208161	GW128	GW128 protein	0.48	NS
325583	KIAA1538	EST:KIAA1538	0.48	NS

=, nomenclatures represent the same gene; Fold Reg VHL-/-VHL+, fold-regulation of each gene by VHL-status as a ratio of expression in 786-0/expression in 786-0/VHL; Fold Reg H/N, fold-regulation of each gene by hypoxia in 786-0/VHL as a ratio of expression in hypoxia/expression in normoxia; NS, not significantly regulated.

confirmed by RPA, that is, the genes responsive to hypoxia were also regulated by VHL-status in 786-0/VHL.

VHL independent hypoxia response

To examine for the presence of VHL-independent hypoxia-mediated changes in gene expression, seven of the hypoxia-

responsive genes predicted by array screening in 786-0 were examined by RPA as being either upregulated (TGFA, IL6, and UGP2) or down-regulated (HCS, CTSW, CYP2B, and NFATC4) by hypoxia (Figure 2B(a) and (b) respectively). This included all of the genes predicted to be significantly hypoxia-inducible in 786-0, and four of the top five differentially expressed genes predicted to be significantly downregulated by hypoxia in 786-0. While one of

Table 2 Candidate hypoxia-responsive genes in 786-0/VHL

IMAGE ID	Abbreviation	Gene	Fold Reg H/N	Fold Reg VHL-/VHL+
841641	CCND1	Cyclin D1	4.6	4.2
712341	RNASE6PL	Ribonuclease 6 precursor	3.3	3.8
272942	HP = DKFZp434K121	Hypothetical protein DKFZp434K121	3.7	2.9
1407750	IGFBP3	Insulin-like growth factor-binding protein-3	3.3	3.6
504527	DUSP1	CL100 = MAP kinase phosphatase 1	3.2	NS
325822	TGFA	Transforming growth factor, alpha	2.8	2.6
51817	MFNG	Manic fringe (Drosophila) homolog	2.4	NS
460538	GSR	Glutathione reductase	2.1	NS
755578	SLC7A5	Solute carrier family 7 (cationic amino-acid transporter), member 5	2.1	NS
486436	UGP2	Uridine diphosphoglucose pyrophosphorylase	2.1	NS
47359	EDNI	Endothelin 1	2	3.4
549383	PLAB	Prostate differentiation factor = MIC-1 = macrophage inhibitory cytokine-1	0.43	0.38
810213	IL1R1	Interleukin-1 receptor, type 1	0.45	0.46
756092	HLA-DQA1	Major histocompatibility complex (MHC) class II, DQ alpha 1 chain	0.45	NS
307325	EDG1	Endothelial differentiation protein = putative G-protein-coupled receptor	0.46	NS
724397	CTSW	Lymphopain = C1 peptidase expressed in natural killer and cytotoxic T cells	0.49	NS
171693	D6S49E	LST1 = leukocyte-specific transcript-1 = interferon-gamma-inducible gene	0.49	NS
504763	SDC4	Syndecan-4	0.49	0.27
181998	NFATC4	Nuclear factor of activated T-cells, cytoplasmic, calcineurin-dependent 4	0.50	NS
82734	FACL2	Fatty-acid-Coenzyme A ligase, long-chain 2	0.50	0.3

=, nomenclatures represent the same gene; Fold Reg VHL-/VHL+, fold-regulation of each gene by VHL-status as a ratio of expression in 786-0/expression in 786-0/VHL; Fold Reg H/N, fold-regulation of each gene by hypoxia in 7860/VHL as a ratio of expression in hypoxia/expression in normoxia; NS, not significantly regulated.

these genes, HCS, was slightly regulated as predicted by array screening, TGFA and IL6 were expressed but unregulated, UGP2 was too lowly expressed to make a definitive conclusion as to regulation, and CTSW, CYP2B, and NFATC4 were not expressed at detectable levels by RPA.

Therefore, while array screening for genes responsive to VHL-status and hypoxia in 786-0/VHL was generally reliable, the majority of genes predicted to be hypoxia-responsive in 786-0 were unable to be confirmed by RPA.

Further characterisation of cyclin D1 RNA and protein expression in renal carcinoma derived cell lines

The expression of CCND1 was examined in three additional renal carcinoma cell lines, and its regulation by the iron chelator desferrioxamine (DFO) (Figure 3A). CCND1 RNA was not affected by either hypoxia or DFO in the functionally wt VHL cell line, Caki-1. It was not modified by hypoxia in the VHL-defective cell lines, UMRC2, UMRC3, and KTCL140 (Figure 3B). CCND1 protein was found to be regulated by VHL-status and hypoxia in the 786-0 background similarly to the regulation of its RNA (Figure 3C).

CCND1 regulation by an inducible VHL in renal cancer cell line RCC4

To better characterise CCND1 regulation, the effect of regulated pVHL expression upon CCND1 protein expression was examined in RCC4/iVHL-HA and RCC4/iVA cells the former comprising an inducible wild-type VHL in a VHL minus background, the latter the control. A 72 h time course of DOX treatment was employed to assess the relationship between pVHL induction and CCND1 expression (Figure 4). There was a time-dependent increase in pVHL-HA protein expression. The kinetics of pVHL-HA expression was rapid and over a large inducible range. HIF-1 α protein expression highlighted an inverse relationship with pVHL expression (Figure 4, middle panel). In contrast to p53 expression, which was not affected by pVHL status, the expression of the CCND1 gene product was almost completely suppressed following pVHL-HA induction. Eliminating the possibility of nonspecific DOX-

associated side effects, CCND1 expression was not modulated in control cells treated in parallel.

Analysis of cyclin D1 mRNA and protein expression in nonrenal cell lines

CCND1 protein has been reported to be downregulated by hypoxia in at least two cell lines: the pheochromocytoma derived PC12 cell line (Conrad *et al*, 1999) and the ovarian carcinoma SKA cell line (Krtolica *et al*, 1999). To assess the tissue specificity of responses cell lines derived from the lung (A549), bladder (EJ-28), breast (HBL100), or cervical (HeLa) tissue were used to analyse CCND1 regulation. CCND1 RNA was constitutively expressed and unresponsive to hypoxia in two cell lines (A549 and EJ-28), had very low level expression in HBL100 cells, and downregulated by hypoxia in HeLa cells (data not shown).

CCND1 protein was downregulated by hypoxia in all the nonrenal cell lines examined including cells derived from lung (A549), cervical (HeLa), or breast (HBL100, ZR-75-1, T-47D) cancers (Figure 3C).

Expression of cyclin D1 in HIF α mutant cells

CCND1 response to hypoxia was examined in a wild-type Chinese hamster ovary cell line (C4.5) and a mutant derivative that is functionally defective in HIF-1 α (Ka13) (Wood *et al*, 1998). While CCND1 RNA was slightly downregulated by hypoxia in both C4.5 and Ka13 (Figure 5A), its protein showed a more significant downregulation by hypoxia, which was HIF α -independent (Figure 5B). CCND1 protein response to hypoxia was examined in wt, HIF-1 α knockout ($^{-/-}$), and HIF-2 α $^{-/-}$ ES. As illustrated in Figure 5C, CCND1 protein was downregulated by hypoxia independent of HIF-1 α or HIF-2 α in this background.

Expression of cyclin D1 in human renal cell carcinomas

CCND1 protein expression was examined in protein extracts from a panel of renal cell carcinomas (RCCs) (T) of either the clear cell

(CC-RCC) or papillary type and compared to CCND1 protein expression in adjacent macroscopically normal tissue (N) from the same patient. In contrast to the four papillary tumours, nine of 10 CC-RCCs expressed markedly elevated levels of CCND1 protein (data not shown).

Regulation of other genes by VHL but not hypoxia

There were more genes regulated by VHL re-expression than regulated by hypoxia in the array. As the experiment with inducible VHL showed a wide range of expression with time and

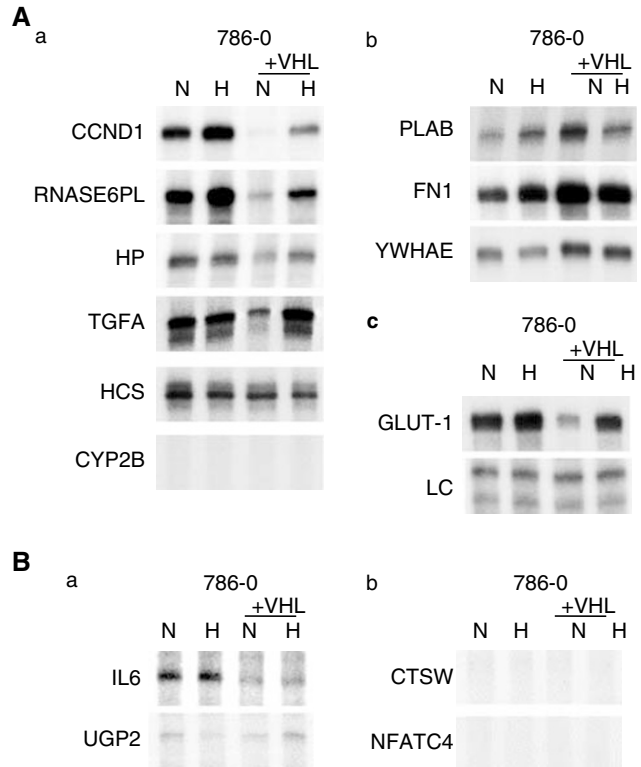
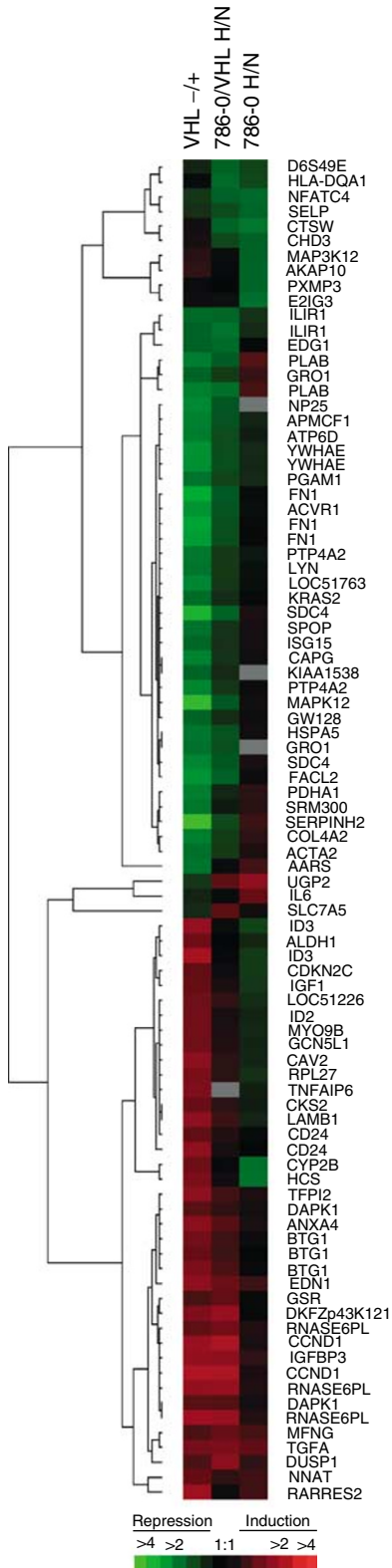


Figure 2 RPAs of array screening predicted VHL and hypoxia-responsive target genes. Cells were exposed to either normoxia (N; 20% O₂) or hypoxia (H; 0.1% O₂) for 16 h. Analysis of expression in 786-0 and the corresponding wt VHL stable transfectant (+VHL) by RPA. See Table 1–3 for corresponding gene names and a summary of the illustrated RPAs. **(A)** Genes predicted to be either downregulated (a) or upregulated (b) by wt VHL. **(c)** Expression of control genes: GLUT-1, a known hypoxia-inducible VHL target; LC, internal control assay (constitutively expressed U6 small nuclear RNA). All samples and assays (in **A** and **B**) were controlled in both ways. **(B)** Genes predicted to be either upregulated (a) or downregulated (b) by hypoxia in 786-0.

Figure 1 Hierarchical cluster analysis of differentially expressed genes. Each row represents a single gene (identified by its abbreviation at the right. See Table 1, 2, or 3 for corresponding gene name). Each column represents the average of the four replicates for each experiment. VHL-/-+, comparison of gene expression in 768-0 (-) vs 786-0/VHL (+) in normoxia; 786-0/VHL H/N, comparison of gene expression in hypoxia (H) vs normoxia (N) in 786-0/VHL; 786-0 H/N, comparison of gene expression in hypoxia (H) vs normoxia (N) in 786-0. Significantly regulated genes are represented by a block of a particular colour, which was determined by its sign and magnitude of regulation by the given stimulus; red blocks indicate overexpressed genes while green blocks indicate underexpressed genes. Black bars indicate genes with approximately equivalent expression levels and grey bars indicate missing data. Colour code at bottom correlates colour intensity with fold-regulation. Dendrogram at the left of the figure illustrates the relationship between the observed patterns of gene regulation, where the shorter the branch length between two gene, the more similar their pattern of regulation across the three comparisons.

Table 3 Candidate hypoxia-responsive genes in 786-0

IMAGE ID	Abbreviation	Gene	Fold Reg H/N
486436	UGP2	Uridine diphosphoglucose pyrophosphorylase	3.4
310406	IL6	Interleukin-6	2.3
325822	TGFA	Transforming growth factor, alpha	2.2
724397	CTSW	Lymphopain = C1 peptidase expressed in natural killer and cytotoxic T cells	0.40
40017	HCS	Cytochrome c	0.42
83231	CYP2B	Cytochrome P450, subfamily IIB, polypeptide 6	0.43
262053	E2IG3	Putative nucleotide binding protein, oestradiol-induced	0.43
181998	NFATC4	Nuclear factor of activated T-cells, cytoplasmic, calcineurin-dependent 4	0.46
182264	SELP	P-selectin = CD62 = GMP140 = granulocyte membrane protein 140	0.48
788518	PXMP3	Peroxisomal membrane protein 3 (35 kDa, Zellweger syndrome)	0.48
43630	AKAP10	Kinase A anchor protein 10	0.48
1071934	MAP3K12	Mitogen-activated protein kinase kinase kinase 12	0.49
359021	CHD3	Zinc-finger helicase (hZFH)	0.50

=, nomenclatures represent the same gene. Fold Reg H/N, fold-regulation of each gene by hypoxia in 786-0 as a ratio of expression in hypoxia/expression in normoxia.

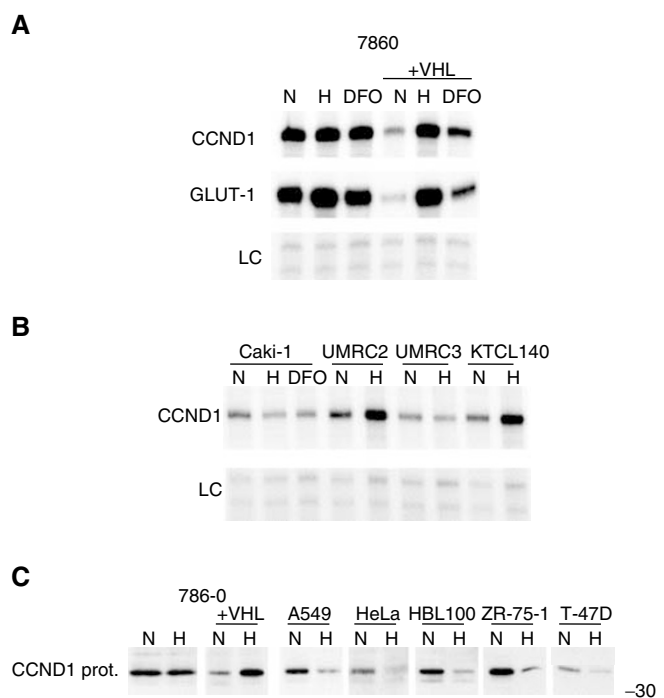


Figure 3 Further characterisation of the cyclin D1 response to hypoxia. Cells were exposed to either normoxia (N; 20% O₂), hypoxia (H; 0.1% O₂), or desferrioxamine (DFO; 100 μM) for 16 h. **(A)** RPAs of cyclin D1 (CCND1) and GLUT-1 in either 786-0 or 786-0/VHL exposed to either N, H, or DFO. **(B)** RPAs of CCND1 in Caki-1 (pVHL functionally wt), UMRC2, UMRC3, and KTCL140 (pVHL functionally deficient). LC, internal control assay (constitutively expressed U6 small nuclear RNA). **(C)** Western blots of whole-cell extracts using anti-human CCND1 monoclonal Ab MCA1756; CCND1 protein expression in kidney (786-0, 786-0/VHL), lung (A549), cervical (HeLa), and breast (HBL100, ZR-75-1, T-47D) derived cell lines. Numbers to the right of protein gels indicate approximate molecular weights (kDa) as determined by protein standards run on each gel.

a similar reciprocal regulation of CCND1, it is possible that a transfectant with a set high level of VHL could be sufficient to continue to repress some genes in hypoxia. The nonrenal cell lines were therefore analysed for hypoxic regulation of genes that showed weak regulation in the transfectant. FN1 was hypoxia-inducible in both (A549, HBL100) nonrenal cell lines in which its RNA was detected.

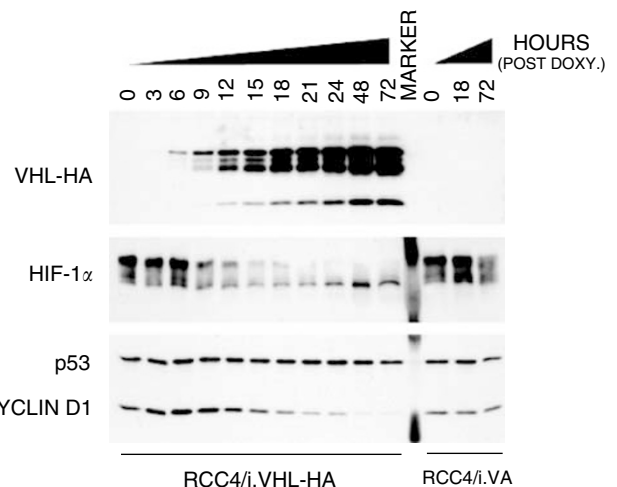


Figure 4 Time course of DOX-inducible pVHL-HA protein expression and effect upon downstream targets. Parallel cultures of RCC4/iVHL-HA (C1.2) and RCC4/iVA (VA1) were grown in the presence of DOX (0.5 μg ml⁻¹) for up to 72 h. Whole-cell protein extracts were collected from subconfluent populations of C1.2 and VA1 cells at 3-h intervals for the first 24 h, and daily thereafter. Whole-cell extracts (20 μg) were resolved by SDS-PAGE: VHL-HA (13.5%); HIF-1α (6%); and cyclin D1/p53 (10%) and immunoblotted with: anti-HA (rat mono); anti-HIF-1α (mAb clone 54); anti-cyclin D1 (pAb MCA1756); and anti-p53 (mAb DO-7). Equivalent loading was confirmed by Coomassie staining membrane after immunoblotting.

Of importance in interpreting these results, a similar phenomenon was observed in our previous study of VHL-responsive genes in the RCC4 background. In view of the results here we reanalysed six of these genes (collagen type 1α1, integrin α5, ferritin light polypeptide, JM4 protein, transgelin, L1 cell adhesion molecule) in the nonrenal cell lines here and they were all hypoxia-responsive in at least one of them (Figure 6).

However, another observation in the renal cell lines was that VHL expression had opposite effects in the 786-0 and the RCC4 on certain genes. Restoration of VHL suppressed LICAM and transgelin in the RCC4 cells but induced expression in the 786-0 cells. Thus hypoxia regulation in opposite directions can occur in different cell lines, again reflecting cell type specific operation of hypoxia pathways.

Klausner's group specifically analysed the control of the cell cycle in the same cell line and found hypoxia upregulation of CCND1 and maintenance of CCND1 at confluence, which was not related to protein stabilisation. Similarly to their study, this only occurred in cell lines that had lost VHL function and been transfected with VHL (Bindra *et al*, 2002). In contrast, Maher's group used an array of 558 genes and found CCND1 upregulated in a VHL mutant renal cancer cell line (RCC4), but it was not regulated by hypoxia (Zatyka *et al*, 2002). This may be due to the problem discussed above where transfection may not restore hypoxia inducibility of genes in such cells. Our results in that cell line with an inducible VHL clearly show that VHL upregulation produces suppression of CCND1, emphasizing the importance of trying to titrate the level of a suppressor gene to determine the effects.

CCND1 protein was downregulated by hypoxia in multiple nonrenal cell lines as previously reported (Conrad *et al*, 1999; Krtolica *et al*, 1999), and we show here that this is by an HIF- α independent mechanism as shown in two different mutant cell types for HIF1- α and one for HIF2- α . The mechanism varied in the nonrenal cell lines, for example, in A549 cells the RNA was not hypoxia-responsive in while its protein was downregulated, whereas in HeLa cells both were downregulated. Taken together, these results indicate that the controls responsible for modulating the CCND1 response to hypoxia are complex and cell type specific. Nevertheless, the renal cell lines stand out as consistently maintaining CCND1 expression under hypoxia in

contrast to all other types examined here and reported in the literature. Our findings are in agreement with clinical data that approximately 75% of RCCs expressed a higher level of CCND1 protein than the normal kidney cortex (Lin *et al*, 1998; Aaltomaa *et al*, 1999; Hedberg *et al*, 1999; Stassar *et al*, 2001).

The renal specificity of transformation by VHL could be partly determined by the signalling pathway we describe here. The mechanism of CCND1 regulation will require further analysis, but a possibility is indirect regulation via TGF α or other growth factors regulated by HIF. Differential tissue specific regulation of genes by hypoxia provides a putative reason, for the remarkable specificity of VHL to produce invasive renal tumours. Our work shows three contributing factors – the upregulation of CCND1 in the presence of VHL mutation, downregulation of 14-3-3 epsilon, and lack of an HIF independent hypoxia response that could mediate the suppression of CCND1, as in other cell types. The global gene array has shown that essentially all hypoxia-regulated genes are regulated by VHL in renal cancer contributing to an understanding of tissue selectivity of transformation.

ACKNOWLEDGEMENTS

The Wellcome Trust (PJR, MEC, PM), Cancer Research UK (ALH), NCI (CS, EL) and Marshall Foundation (CCW) supported this work.

REFERENCES

- Aaltomaa S, Lipponen P, Ala-Opas M, Eskelinen M, Syrjanen K, Kosma VM (1999) Expression of cyclins A and D and p21(waf1/cip1) proteins in renal cell cancer and their relation to clinicopathological variables and patient survival. *Br J Cancer* **80**: 2001–2007
- Bindra RS, Vasselli JR, Stearman R, Linehan WM, Klausner RD (2002) VHL-mediated hypoxia regulation of cyclin D1 in renal carcinoma cells. *Cancer Res* **62**: 3014–3019
- Castellani V, De Angelis E, Kenwrick S, Rougon G (2002) Cis and trans interactions of L1 with neuropilin-1 control axonal responses to semaphorin 3A. *EMBO J* **21**: 6348–6357
- Chen F, Kishida T, Yao M, Hustad T, Glavac D, Dean M, Gnarr JR, Orcutt ML, Duh FM, Glenn G *et al* (1995) Germline mutations in the von Hippel-Lindau disease tumor suppressor gene: correlations with phenotype. *Hum Mutat* **5**: 66–75
- Cockman ME, Masson N, Mole DR, Jaakkola P, Chang GW, Clifford SC, Maher ER, Pugh CW, Ratcliffe PJ, Maxwell PH (2000) Hypoxia inducible factor- α binding and ubiquitylation by the von Hippel-Lindau tumor suppressor protein. *J Biol Chem* **275**: 25733–25741
- Conrad PW, Rust RT, Han J, Millhorn DE, Beitner-Johnson D (1999) Selective activation of p38 α and p38 γ by hypoxia. Role in regulation of cyclin D1 by hypoxia in PC12 cells. *J Biol Chem* **274**: 23570–23576
- Eberwine J, Yeh H, Miyashiro K, Cao Y, Nair S, Finnell R, Zettel M, Coleman P (1992) Analysis of gene expression in single live neurons. *Proc Natl Acad Sci USA* **89**: 3010–3014
- Eisen MB, Spellman PT, Brown PO, Botstein D (1998) Cluster analysis and display of genome-wide expression patterns. *Proc Natl Acad Sci USA* **95**: 14863–14868
- Hedberg Y, Davoodi E, Roos G, Ljungberg B, Landberg G (1999) Cyclin-D1 expression in human renal-cell carcinoma. *Int J Cancer* **84**: 268–272
- Iliopoulos O, Levy AP, Jiang C, Kaelin Jr WG, Goldberg MA (1996) Negative regulation of hypoxia-inducible genes by the von Hippel-Lindau protein. *Proc Natl Acad Sci USA* **93**: 10595–10599
- Ivan M, Kondo K, Yang H, Kim W, Valiando J, Ohh M, Salic A, Asara JM, Lane WS, Kaelin Jr WG (2001) HIF α targeted for VHL-mediated destruction by proline hydroxylation: implications for O₂ sensing. *Science* **292**: 464–468
- Iwai K, Yamanaka K, Kamura T, Minato N, Conaway RC, Conaway JW, Klausner RD, Pause A (1999) Identification of the von Hippel-Lindau tumor-suppressor protein as part of an active E3 ubiquitin ligase complex. *Proc Natl Acad Sci USA* **96**: 12436–12441
- Jiang YD, Zhang W, Kondo K, Klco JM, St MTB, Dufault MR, Madden SL, Kaelin WG, Nacht M (2003) Gene expression profiling in a renal cell carcinoma cell line: dissecting VHL and hypoxia-dependent pathways. *Mol Cancer Res* **1**: 453–462
- Koong AC, Denko NC, Hudson KM, Schindler C, Swiersz L, Koch C, Evans S, Ibrahim H, Le QT, Terris DJ, Giaccia AJ (2000) Candidate genes for the hypoxic tumor phenotype. *Cancer Res* **60**: 883–887
- Krtolica A, Krucher NA, Ludlow JW (1999) Molecular analysis of selected cell cycle regulatory proteins during aerobic and hypoxic maintenance of human ovarian carcinoma cells. *Br J Cancer* **80**: 1875–1883
- Lal A, Peters H, St Croix B, Haroon ZA, Dewhirst MW, Strausberg RL, Kaanders JH, van der Kogel AJ, Riggins GJ (2001) Transcriptional response to hypoxia in human tumors. *J Natl Cancer Inst* **93**: 1337–1343
- Latif F, Tory K, Gnarr J, Yao M, Duh FM, Orcutt ML, Stackhouse T, Kuzmin I, Modi W, Geil L *et al* (1993) Identification of the von Hippel-Lindau disease tumor suppressor gene. *Science* **260**: 1317–1320
- Lin BT, Brynes RK, Gelb AB, McCourty A, Amin MB, Medeiros LJ (1998) Cyclin D1 expression in renal carcinomas and oncocytomas: an immunohistochemical study. *Mod Pathol* **11**: 1075–1081
- Maxwell PH, Wiesener MS, Chang GW, Clifford SC, Vaux EC, Cockman ME, Wykoff CC, Pugh CW, Maher ER, Ratcliffe PJ (1999) The tumour suppressor protein VHL targets hypoxia-inducible factors for oxygen-dependent proteolysis. *Nature* **399**: 271–275
- Semenza GL (1999) Regulation of mammalian O₂ homeostasis by hypoxia-inducible factor 1. *Annu Rev Cell Dev Biol* **15**: 551–578
- Stassar MJ, Devitt G, Brosius M, Rinnab L, Prang J, Schradin T, Simon J, Petersen S, Kopp-Schneider A, Zoller M (2001) Identification of human renal cell carcinoma associated genes by suppression subtractive hybridization. *Br J Cancer* **85**: 1372–1382
- Tenenbaum JB, de Silva V, Langford JC (2000) A global geometric framework for nonlinear dimensionality reduction. *Science* **290**: 2319–2323
- van Hemert MJ, Steensma HY, van Heusden GP (2001) 14-3-3 proteins: key regulators of cell division, signalling and apoptosis. *Bioessays* **23**: 936–946
- Wiesener MS, Turley H, Allen WE, Willam C, Eckardt KU, Talks KL, Wood SM, Gatter KC, Harris AL, Pugh CW, Ratcliffe PJ, Maxwell PH (1998) Induction of endothelial PAS domain protein-1 by hypoxia: characterization and comparison with hypoxia-inducible factor-1 α . *Blood* **92**: 2260–2268

Wood SM, Wiesener MS, Yeates KM, Okada N, Pugh CW, Maxwell PH, Ratcliffe PJ (1998) Selection and analysis of a mutant cell line defective in the hypoxia-inducible factor-1 alpha-subunit (HIF-1alpha). Characterization of hif-1alpha-dependent and -independent hypoxia-inducible gene expression. *J Biol Chem* **273**: 8360–8368

Wykoff C, Pugh CW, Maxwell PH, Harris AL, Ratcliffe PJ (2000) Identification of novel hypoxia dependent and independent target genes

of the von Hippel-Lindau (VHL) tumour suppressor by mRNA differential expression profiling. *Oncogene* **19**: 6297–6305

Zatyka M, da Silva NF, Clifford SC, Morris MR, Wiesener MS, Eckardt KU, Houlston RS, Richards FM, Latif F, Maher ER (2002) Identification of cyclin D1 and other novel targets for the von Hippel-Lindau tumor suppressor gene by expression array analysis and investigation of cyclin D1 genotype as a modifier in von Hippel-Lindau disease. *Cancer Res* **62**: 3803–3811