

Home confinement during the COVID-19: day-to-day associations of sleep quality with rumination, psychotic-like experiences, and somatic symptoms

Péter Simor* ^{1,2}, Polner B* ³, Báthori N³, Sifuentes-Ortega R², Van Roy A² Albajara Sáenz A², Luque González A⁴, Benkirane O², Nagy T¹, Peigneux P².

1 Institute of Psychology, ELTE, Eötvös Loránd University, Budapest, Hungary.

2 UR2NF, Neuropsychology and Functional Neuroimaging Research Unit at CRCN - Center for Research in Cognition and Neurosciences and UNI - ULB Neurosciences Institute, Université Libre de Bruxelles (ULB), Brussels, Belgium.

3 Budapest University of Technology and Economics, Department of Cognitive Science

4 Universidad Autónoma de Madrid, Department of Biological and Health Psychology

Corresponding author:

Péter Simor, Ph.D.

Institute of Psychology, ELTE Eötvös Loránd University, Budapest, Hungary.

1064 Budapest, Izabella utca 46.

simor.peter@ppk.elte.hu

+36302755968

* The authors contributed equally to this work.

Abstract

Due to the COVID-19 pandemic, populations from many countries have been confined at home for extended periods of time in stressful environmental and media conditions. Cross-sectional studies already evidence deleterious psychological consequences, with poor sleep as a risk factor for impaired mental health. However, limitations of cross-sectional assessments are response bias tendencies, and the inability to track daily fluctuations in specific subjective experiences in extended confinement conditions. In a prospective study conducted across three European countries, we queried participants (N = 166) twice a day through an online interface about their sleep quality and their negative psychological experiences for two consecutive weeks. Focus was set on between-and within-person associations of subjective sleep quality with daytime experiences such as rumination, psychotic-like experiences, and somatic complaints about the typical symptoms of the coronavirus. Results show that daily reports of country-specific COVID-19 deaths predicted increased negative mood, psychotic-like experiences and somatic complaints during the same day, and decreased subjective sleep quality the following night. Disrupted sleep was globally associated with negative psychological outcomes during the study period, and a relatively poorer night of sleep predicted increased rumination, psychotic-like experiences, and somatic complaints the following day. This temporal association was not paralleled by daytime mental complaints predicting relatively poorer sleep quality on the following night. Our findings show that night-to-night changes in sleep quality predict how individuals cope the next day with daily challenges induced by home confinement.

Keywords

Coronavirus, sleep, rumination, somatic symptoms, psychotic-like, stress.

Statement of significance

We examined whether night-to-night changes in sleep quality predict changes next day's psychological experiences and, whether daytime psychological experiences predict changes in sleep quality the following night during home confinement due to the COVID-19 pandemic. Subjective sleep was associated with worse outcomes in general and predicted increased rumination, psychotic-like experiences, and somatic complaints about the symptoms of the coronavirus the following day. Nevertheless, daytime negative psychological experiences were not predictive of poorer sleep quality the following night. Daily reports of negative psychological experiences were not independent of the perceived context of the pandemic: country-specific COVID-19 deaths were associated with increased negative mood, psychotic-like experiences, and somatic complaints during the same day, and decreased subjective sleep quality the following night.

Accepted Manuscript

Introduction

In December 2019 a new coronavirus (SARS-CoV-2) was identified as the pathogen of an acute respiratory syndrome reported first in Wuhan, China¹. The World Health Organization announced the disease (eventually named COVID-19) as a public health emergency of international concern², and in the next three months, the COVID-19 continued to spread all over the world rapidly growing into a global pandemic. In order to slow the propagation of the virus as well as to attenuate the burden on health care systems, many countries introduced unprecedented measures of home confinement requiring individuals to stay at home and limit outdoor activities to the most necessary purposes. The restrictions drastically changed many individuals' daily routines that within the menacing context of the pandemic could lead to severe mental health complaints^{3,4}, requiring health professionals to consider the psychological impact of COVID-19^{5,6}.

A number of cross-sectional surveys conducted amongst front-line medical staff^{7,8}, university students^{9,10}, and the general population¹¹⁻¹³ corroborated the concerns regarding mental health by reporting a pronounced increase in anxiety, depression, and symptoms of posttraumatic stress disorder (PTSD). Beyond these warning signs of psychological distress, a great proportion of the respondents reported frequent sleep difficulties^{11,13,14} and poor sleep emerged as an important risk factor for mental health complaints³. Additionally, disrupted sleep mediated the link between threat perception (measured by the COVID-19 death count) and negative emotions in a longitudinal study¹⁵, and those who reported more sleep difficulties during than before the confinement exhibited higher levels of depression, anxiety, and stress¹⁶. These findings are in line with previous studies showing the critical impact of poor sleep on the development and maintenance of mental health complaints¹⁷⁻²⁰, and the putative role of healthy sleep in emotional adaptation²¹⁻²⁴. During the confinement, reduced physical activity and lower exposure to daylight, irregular sleep-wake schedules, difficulties following good sleep habits, excessive and anxiety-provoking media use, increased levels of stress and social isolation may have deleterious impact on sleep quality and render individuals more vulnerable to mental health problems²⁵. Therefore, monitoring sleep complaints during the pandemic is particularly relevant from a mental health perspective.

Limitations of the above studies are that sleep quality and daytime symptoms were measured retrospectively (e.g. asking participants to rate sleep quality during the previous weeks or month) and data were collected using cross-sectional designs. Although the approach allows quick and economical assessments in large samples, it is extremely difficult in such designs to address the directionality of the associations (i.e., whether sleep disruption temporally predicts daytime dysfunctions or the other way around). In addition, retrospective questionnaires might be more prone to biases^{26,27}, especially when individuals are queried in extremely unusual and stressful circumstances such as the COVID-19 pandemic. Studies indicate that retrospective self-reports are strongly biased by negative mood states²⁷, are subject to contamination between scales due to response bias tendencies²⁸, and show little agreement with prospectively assessed measures of similar variables²⁹. Furthermore, retrospective cross-sectional studies can only account for differences between individuals and neglect intra-individual variability (i.e. moment-to-moment changes in sleep and mental complaints within the same individuals), whereas prospective assessments point to considerable within-subject variability in sleep quality^{30,31}, daytime affective states^{32,33}, and even in states associated with personality traits that are considered to be stable over time³⁴.

To overcome these limitations, we conducted a two-week, prospective study investigating the associations between subjective sleep quality and daytime experiences during the confinement of the COVID-19 pandemic. Our prospective data collection allowed us to simultaneously examine associations across and within individuals. Hence, we tested whether individuals with poor sleep exhibited a higher level of mental health complaints during the two-week assessment period, and whether subtle night-to-night fluctuations in sleep quality were prognostic of increased negative experiences the next day (within individuals). To address the temporal directionality of these associations, we examined whether subtle changes in daytime reports predicted changes in subjective sleep quality the following night.

Widely used measures of anxiety, depression, and stress provide efficient means to estimate the severity of negative affect and the prevalence of psychopathological conditions^{3,12}, but are not capable of capturing more specific and transient mental

experiences that may impose an emotional burden on individuals during home confinement. Here, we focused on three factors particularly relevant within the context of the COVID-19 pandemic: rumination, psychotic-like experiences, and somatic complaints mimicking symptoms of COVID-19. Rumination refers to repetitive, intrusive, and hardly controllable thoughts about self-relevant situations and their underlying causes, and appears as a transdiagnostic factor in various psychopathological states^{35,36}. Rumination exhibits transient, state-like variations in healthy individuals and is associated with neurophysiological indices of impaired emotional adaptation³⁷. We assumed that the unpredictable nature of the pandemic might facilitate ruminative thoughts about the virus and the confinement, and given the previously reported links between rumination and sleep quality³⁸, we expected that increased rumination would be linked to impaired sleep. Importantly, rumination predicts key mental health outcomes such as depression³⁹ and paranoia⁴⁰.

Psychotic-like experiences are unusual subjective experiences that phenomenologically resemble the symptoms of psychosis at a subclinical level (e.g., difficulties in controlling thoughts, cognitive anomalies, strange perceptions, and paranoid ideas), which are relatively common in the general population⁴¹. Psychotic-like experiences also exhibit considerable moment-to-moment fluctuations^{42,43} and may increase under stressful circumstances^{42,44}, and after disrupted sleep^{30,43,45}. We reasoned that psychotic-like experiences represented another particularly relevant psychological reaction to the stressful aspects of the confinement periods such as social isolation⁴⁶, and increased uncertainty of the environment. From a public mental health perspective, it is crucial that distressing subthreshold psychotic-like experiences predict the risk of developing clinically relevant psychosis⁴⁷. Coronavirus anxiety (the fear of obtaining the virus) emerged as a novel mental health issue of severe concern⁴⁸ that was associated with a number of psychological difficulties. Therefore, somatic complaints mimicking the most common symptoms of COVID-19 were examined as a measure of somatic symptom severity⁴⁹ possibly related to the health anxiety provoked by the pandemic. Although day-to-day (intra-individual) fluctuations of somatic symptoms were mainly evidenced in clinical populations^{50,51}, healthy individuals might also express pronounced variability in somatic symptoms in the context of the unprecedented coronavirus pandemic. We thus hypothesized that sleep disruptions would be associated with

rumination, psychotic-like experiences, and somatic complaints during the study period, and that nights of poor sleep quality would eventually lead to more symptoms the following day within an individual. Likewise, we examined the inverse direction, i.e., whether daytime rumination, psychotic-like experiences, and somatization could predict worse sleep quality the following night. Additionally, we reasoned that trait-like characteristics such as proneness for a dysregulated stress-response after exposure to a stressor (as reflected by PTSD-like symptoms^{52,53}) and difficulties in controlling thoughts and attention (as reflected by cognitive disorganization^{54,55}) would be predictive of increased maladaptation during the pandemic. Therefore, we examined the association of these retrospectively assessed psychopathological indices with daytime complaints over and above the hypothesized association with sleep.

Methods

Participants. Individuals (N = 728, 556 (76%) females, age = 18-69 years, Mean age = 28.5, SD age = 10.09) willing to participate in our study were selected from three European countries in which restrictive confinement measures were adopted. The majority of the respondents were young, university students and their family members. Participants were contacted by advertisements placed on social media, and through the web pages and mailing services of the participating universities (Université Libre de Bruxelles, Belgium, Eötvös Loránd University, Hungary, and Autonomous University of Madrid, Spain). In the first phase of the study, participants were asked to complete an online questionnaire including self-report scales of standardized questionnaires measuring sleep quality⁵⁶, depression⁵⁷, schizotypy⁵⁸, and symptoms of PTSD⁵⁹. Demographic variables and items related to events (e.g. tested positive for COVID-19) and experiences related to the confinement (e.g. household, school- and work-related stress) were also assessed. This cross-sectional questionnaire served us to screen and select the participants for the second, prospective phase of the study. Individuals with current or prior history of neurological, psychiatric, or chronic somatic diseases, scoring above 12 on the short form of the Beck Depression Inventory (BDI-13⁵⁷), or taking medication (except contraceptives) were excluded. In addition, we excluded participants who reported to be previously diagnosed with COVID-19 or believed that they currently suffered or had suffered but recovered from the virus. Individuals fulfilling the inclusion criteria and willing to continue participation (N = 246) were

selected for the prospective study phase. 184 individuals (146 (79 %) females, age 18-69 years, $M_{\text{age}} = 26.28$, $SD = 7.42$) were assigned for the second phase of the study assessing daily questionnaires during two weeks. Informed consents were obtained, and the study was approved by the corresponding local ethical committees of the three participating universities, the local Ethics Committee of the Université Libre de Bruxelles, the Ethics Committee of the Eötvös Loránd University, and the Ethics Committee of the Autonomous University of Madrid, respectively.

Procedure. The study consisted of three phases: 1) the administration of the cross-sectional questionnaire to screen and enroll potential participants, 2) the prospective study phase asking participants to complete short questionnaires twice a day during two consecutive weeks, and 3) the debriefing phase. The same questionnaire-batteries were used for the Belgian, Hungarian, and Spanish samples using the standardized or available versions in English, Hungarian, and Spanish, respectively. Single items were created in each language by the respective native speaker authors of the research team. Items that were not available in one language were translated by the native speaker members of the research team. Research assistants invited the selected participants to sign up for the prospective phase of the study through a dedicated website where only the invited participants could register and approve their registration via a two-step authentication process. Participants signed up between the 9th of April 2020 and the 14th of May 2020 for the two-week assessment period (See Figure 1 showing the two-week assessment period within the timeline of the pandemic). Daily questionnaires requiring approximately 3-5 minutes per day were sent to participants via the online interface. A morning questionnaire was available between 5:00 and 12:30, and an evening questionnaire was accessible between 18:00 and 03:00. Participants were instructed to complete the morning questionnaire upon awakening, and to complete the second questionnaire always before going to sleep. A reminder email of the morning questionnaire was sent between 7:00-9:00, and a reminder of the second questionnaire was sent between 19:00-20:00. The two-week long prospective study period started with the first morning questionnaire the day after the participant completed the registration and ended on the 14th day with the last evening questionnaire. Morning questionnaires assessed subjective sleep quality and sleep schedules (bedtime, sleep latency, and wake up time). The evening questionnaires consisted of items measuring

mood, rumination, psychotic-like experiences and somatic complaints comprising the most typical symptoms of the COVID-19. Participants were also asked to report daily caffeine intake and alcohol consumption and their overall satisfaction with daily activities (work, physical activity, social interactions, media use, etc.). After finishing the last questionnaire, participants were instructed to access the debriefing that consisted of a final phase providing the possibility for the participants to ask questions regarding the study and to report any issue that they considered important. Moreover, they were asked to report if they had been tested positive for COVID-19 and if they assumed that they had contracted the virus during the study period.

Cross-sectional measures. The PTSD Checklist from the DSM-5 (PCL-5) was used to assess PTSD-like symptoms⁵⁹. This 20-item self-report questionnaire that assesses DSM-5 symptoms of PTSD is suitable to screen individuals for PTSD, but it can also be applied from a dimensional point of view to quantify the severity of symptoms of stress in clinical and subclinical populations⁶⁰. Symptoms of depression were assessed with the short form of the Beck Depression Inventory (BDI-13). The questionnaire is suitable to screen individuals with mild, moderate, or severe symptoms of depression⁵⁷. Sleep disturbances were measured by the respective subscale of the Pittsburgh Sleep Quality Index (PSQI⁵⁶), a questionnaire used widely to evaluate subjective sleep quality. The sleep disturbances subscale focuses on subjective sleep complaints, such as having difficulties falling asleep, nocturnal awakenings, pain and discomfort during bedtime, as well as daytime sleepiness and fatigue. We used the Cognitive Disorganization scale of the Oxford-Liverpool Inventory of Feelings and Experiences (O-LIFE) to evaluate the cognitive aspects of trait-like schizotypy⁵⁸. The 11 yes/no items of the scale assess difficulties in attention, concentration, decision making, and social functioning. Validated versions of the PCL-5, BDI-13, PSQI, and O-LIFE questionnaires were available in all three languages. The levels of school- and/or work-related stress experienced as a consequence of the confinement were assessed by seven-point Likert-scales (e.g. 0 – I experience much less stress since the introduction of the confinement, 6 – I experience much more stress...).

Morning questionnaire. Participants completed the Groningen Sleep Quality Scale (GSQS)⁶¹ each morning. The questionnaire consists of 14 binary items that measure the extent of subjective sleep fragmentation. Previous studies indicate that the questionnaire is an adequate tool for assessing subjective sleep disruption⁶². Additionally, participants were asked to report their bedtime, sleep latency (the time they needed to fall asleep) and wake up time. These responses were used to compute subjective sleep duration (i.e. the time elapsed between sleep onset and morning awakening). GSQS was not available in Spanish, therefore, the English-version of the GSQS was translated by one of the native Spanish speakers of the research team. Two additional native speakers checked, discussed and finalized the translations by consensus.

Evening questionnaire. To measure ruminative, perseverative and intrusive thoughts, items assessing state-rumination (developed by Kocsel and colleagues³⁷) were adapted to the context of the confinement. Three statements (“I was not able to get certain thoughts out of my mind.”; “I kept thinking about something over and over again.”; “I had difficulties in suppressing my thoughts about the current situation.”) were rated on a 4-point Likert scale. Items of state rumination were not available in Spanish, therefore, these were translated by the native Spanish speaker members of the research team. Psychotic-like experiences were assessed with a scale consisting of eight items that were originally adapted from two validated instruments^{42,63}. The items (rated on an 8-point Likert scale) covered perceptual anomalies (e.g. “Familiar things have seemed strange or unusual”), cognitive disorganization (e.g. “I have found it difficult to think clearly”) and paranoid ideation (e.g. “I think people have been saying or doing things to annoy me.”). The scale showed good psychometric properties and proved to be effective for the daily assessment of psychotic-like experiences in a previous study⁴³. Somatic complaints were measured by items adopted from the Patient Health Questionnaire (PHQ-15)⁴⁹. The PHQ-15 was designed to measure the prevalence of the most common body symptoms (e.g., headache, nausea, etc.). Here, we used items that overlapped with the most typical symptoms of the coronavirus such as stomach pain, headache, chest pain, dizziness, low energy, muscle pain, shortness of breath, and we added an extra item concerning the experience of dry cough or sore throat. Daytime mood was assessed by a single item (“Throughout the day my mood was...”) rated on an 8-point

Likert scale (0 – Extremely negative: sad, negative, distressed; 7 – Extremely positive: happy, joyful, relaxed).

Statistical analyses. In order to account for the nested structure of the data (repeated measures within participants), linear mixed models were fitted using the lme4 package⁶⁴ in R (v3.6.3). Every model included a random intercept and random slope per participant for the within-person centered time-varying predictor. In case of convergence issues, random slopes were removed, and a random intercept-only model was fitted. We disentangled between- and within-person effects of time-varying variables obtained from the prospective study⁶⁵. Within-person averages over the two-week study period were entered to assess between-person effects (i.e. to capture differences between participants scoring high or low on a measure on average), while within-person centering was applied to examine within-person effects (i.e. to capture correlates of day-to-day deviation from the participant's average on a measure). When we fitted models that included somatic complaints, we excluded data from eight participants who indicated at debriefing phase that they believed they had contracted the coronavirus during their participation in the study. Autocorrelation was taken into account in all the examined models detailed below. Therefore, each dependent variable was also predicted by the same variable at the preceding time point (i.e. preceding day). The reason to include an autocorrelation parameter in the models was to control for carryover effects in our measures of interest.

First, we investigated how events associated with the pandemic predicted daytime mental health complaints, sleep disruption, and sleep duration. Predictors were country-wise and worldwide numbers of COVID-related deaths for the given day (accessed from <https://www.worldometers.info/coronavirus/coronavirus-death-toll/> as of 19th May 2020). In order to facilitate interpretation of coefficient estimates, the number of country-wise and global deaths per day were scaled with a division by 10 and 1000, respectively. Additionally, we calculated the number of days since the introduction of confinement in the country of the participant (Belgium: 14th March 2020, Hungary: 28th March 2020, Spain: 17th March 2020). Time spent in confinement was expressed in weeks (number of days / 7) in order to have this variable on a scale comparable to the other predictors (this was done to facilitate model fitting and interpretation of coefficients). In order to capture non-linear effects, time spent in

confinement was entered as a linear and as a quadratic term as well. Age, gender, PTSD-like symptoms (PCL-5 sum score) and cognitive disorganization were entered as person-specific time-invariant predictors. Dependent variables were the sum scores derived from the prospective measurements of rumination, psychotic-like experiences and somatic complaints during the day, and sleep disruption and sleep duration the following night.

Then, we analyzed the relationship between sleep disruption / duration and mental health complaints on the next day. Dependent variables were the sum scores derived from the prospective measurements of rumination, psychotic-like experiences, and somatic complaints. As diagnostic plots suggested that model residuals were not normally distributed, each dependent variable was log10-transformed, after which model residuals did not appear to strongly violate normality. Age, gender, PTSD-like symptoms (PCL-5 sum score), cognitive disorganization and within-person mean of subjective sleep disruption (GSQS sum score) / duration were entered as level-2 predictors, and within-person centered subjective sleep quality / duration were entered as a level-1 predictor in the models.

In the analysis of the relationship between daytime mental health complaints and sleep disruption / duration the following night, the dependent variables were sleep quality (GSQS sum score) and sleep duration. Age, gender, PTSD-like symptoms (PCL-5 sum score), cognitive disorganization and within-person means of mood, rumination, psychotic-like experiences and somatic complaints were entered as level-2 predictors, and within-person centered mood, rumination, psychotic-like experiences and somatic complaints (of the day before sleep) were entered as level-1 predictors. The p-values corresponding to the analyses of sleep-related variables (both level-1 and level-2 predictors) were adjusted by the Benjamini-Hochberg procedure of False Discover Rate (FDR) to address the issue of multiple comparisons⁶⁶.

Results

Screening of participants and cross-sectional measures. In the first phase of the study, participants from three European countries in which restrictive confinement measures were adopted (Belgium, Hungary, and Spain) responded to a survey including items addressing cognitive disorganization, posttraumatic stress symptoms, sleep

quality, depression and general demographic data that served us to screen and select individuals for the ensuing prospective study (See **Methods**). Thirteen participants reported that they were tested positive for COVID-19, and their data were not considered in the subsequent analyses. The prevalence rate of clinically relevant (moderate) depression⁶⁷ in our sample (N = 717, 547 females) was 23 % (BE: 25.1 %, HU: 27 %, ESP: 18.4%), and 19.2 % of the respondents (BE: 21.1 %, HU: 25.6 %, ESP: 13.1 %) scored over the cut-off score to identify clinically relevant symptoms of PTSD⁵⁹ corroborating previous reports about the substantial increase of mental health problems during the pandemic³. Although moderate differences emerged across the countries with respect to PTSD symptoms, school- and work related stress, and cognitive disorganization (See **Supplementary Materials**), the psychometric measures of mental health complaints exhibited similar patterns of correlations in our subsamples (**Figure 2**).

Prospective study: Adherence to daily questionnaires. 184 individuals (146 (79 %) females, age 18-69 years, $M_{age} = 26.28$, $SD = 7.42$) were assigned for the second phase of the study assessing daily questionnaires during two-weeks. 22 % of the respondents completed all questionnaires, and 51 % completed more than 80 % of the daily questionnaires. Nine percent of the participants responded to less than 50 % of the morning or the evening questionnaires, and their data were excluded from further analyses yielding to the prospective data of 166 individuals. See **Table 1** for a detailed description of our study sample.

COVID-19-related deaths and days since the introduction of confinement predict daytime functioning. The first analyses of the prospective study focused on the day-to-day associations of mental health complaints with the perceived context of the confinement. COVID-19-related deaths and the time spent in confinement were the objective measures reflecting the circumstances of the pandemic during the study period. We explored whether daily reports of mental health problems were associated with the daily numbers of COVID-19-related deaths worldwide and in the country of the respondents. Moreover, since the number of deaths had not been independent of the time spent since the introduction of the restrictive measures, we also examined the influence of time (expressed as a fraction of weeks) spent in confinement on daily reports of mood, rumination, psychotic-like experiences, somatic complaints, sleep

disruption, and sleep duration (**Table 2**). The number of COVID-19-related deaths in the country predicted more psychotic-like experiences and somatic complaints during the day, and worse subjective sleep quality during the following night, whereas the number of worldwide deaths predicted more somatic complaints during the day and prolonged sleep duration the following night. The number of weeks since the introduction of confinement in the country had a negative linear effect on rumination and psychotic-like experiences, and a positive linear effect on sleep duration. Moreover, the number of weeks since the introduction of confinement had a positive quadratic effect on rumination and psychotic-like experiences (See **Table 2** for statistical parameters). Further inspection of the plots of predicted values suggested that there was an overall improvement of mental health complaints with time spent in confinement (**Figure 3**). Moreover, the steepness of the curve (reflecting the gradual amelioration of daily symptoms) was decreasing with time, indicating that the amelioration of mental health complaints exhibited a slowing trend. These findings indicate that day-to-day fluctuations in mental health conditions were specifically associated with objective measures (number of deaths and days spent in confinement) reflecting the context of the confinement.

Night-to-night fluctuations in sleep quality predict daytime functioning. We examined if subjective sleep disruption (on average) was associated with increased rumination over the two-week study period, and whether night-to-night variations in sleep quality were associated with changes in daily rumination within individuals. **Figure 4/A** illustrates the association between sleep disruption and rumination between- and within individuals, and statistical model parameters are specified in **Table 3**. Subjective sleep quality was associated with rumination in both cases: more disrupted sleep (on average) was associated with increased rumination over the two-week study period, and a relatively poorer night of sleep (i.e. reduction of sleep quality compared to the individual, two-week average) predicted relatively increased rumination the following day. In addition, trait-like, retrospective measures of posttraumatic symptoms (assessed by the PCL-5), and cognitive disorganization were both predictive of increased rumination over the study period (See **Table 3**).

Next, we performed a similar analysis regressing the same variables on psychotic-like experiences. As expected, worse sleep quality was globally associated with increased

reports of psychotic-like experiences. Moreover, night-to-night changes in sleep quality within individuals were also linked to increased psychotic-like experiences the following day, that is, worse sleep quality predicted more psychotic-like experiences the next day. PTSD-like symptoms and cognitive disorganization (were both predictive of increased psychotic-like experiences (see **Figure 4/B** and **Table 3**).

Likewise, we investigated the links between sleep disruption and the daily experience of somatic symptoms of the COVID-19. At the between-subject level, subjective sleep disruption was positively associated with reports of somatic symptoms: the within-person average of sleep disruption was associated with a higher rate of somatic complaints over the course of the study. Regarding daily fluctuations within individuals, relatively worse sleep quality on a given night was associated with more severe somatic symptoms the following day. PCL-5 scores and cognitive disorganization both emerged as significant predictors of (increased) somatic symptoms in the statistical model (see **Figure 4/C** and **Table 3**).

In sum, disrupted sleep was associated with increased rumination, psychotic-like experiences, and somatic symptom severity as measured prospectively during the two-week study period. Moreover, night-to-night variations in subjective sleep quality predicted next-day's functioning, indicating that a relatively worse night of sleep was more likely to lead to increased rumination, psychotic-like experiences, and somatic symptoms the following day.

Subjective sleep duration is not predictive of daytime mental complaints. In contrast to subjective sleep quality, sleep duration on average or daily fluctuations of the duration of sleep were not associated with daytime rumination, psychotic-like experiences, or somatic complaints (Table 3).

Subjective sleep quality predicts next day functioning regardless of mood fluctuations. Sleep disruption was linked to lower positive mood based on the averages of the study period (between-individuals; $b = -0.54$, CI: $-0.097 - -0.012$, $p < 0.05$), and daily changes in sleep disruption were temporally associated with lower positive mood the next-day (within-individuals; $b = -0.06$, CI: $-0.07 - -0.05$, $p < 0.001$). Although negative mood was associated with increased rumination, psychotic-like experiences, and somatic symptoms on both the between- and within-individual levels, the two-week

averages of, as well as the daily variations in subjective sleep disruption remained significant predictors of the outcome variables beyond the variance explained by negative mood (See Table S1 - Supplementary Materials). These findings suggest that negative mood did not fully account for the associations of sleep disruption with rumination, psychotic-like experiences, and somatic symptoms.

Daytime mental complaints and sleep quality and duration the following night. To investigate bidirectional relationships regarding day-to-day associations between sleep and daytime mental health problems, we also examined the temporal associations between daytime mental health complaints and sleep on the following night. Daily rates of rumination, psychotic-like experiences, or negative mood did not significantly predict subjective sleep disruption and sleep duration the following night. Interestingly, daytime somatic complaints showed a negative association with sleep disruption the following night, that is, more somatic complaints during the day (relative to one's own average) were followed by better sleep quality the following night. On the other hand, higher average level of somatic complaints reported during the study period was associated with poorer sleep quality as shown by a positive association between somatic complaints. Nevertheless, the associations between somatic-complaints and sleep disruption did not remain significant after the statistical correction for multiple comparisons. In addition, older age was associated with poorer sleep quality (on average) during the two-week assessment period (See **Table 4**). In sum, whereas sleep disruption predicted more mental complaints the following day, such temporal associations in the other direction were only observed at a trend-level in case of within-person changes in somatic complaints, whose increases were somewhat paradoxically associated with improvement of subjective sleep quality.

Carryover effects from day-to-day within variables. In order to account for carryover effects and to verify whether the associations between sleep and next day's mental health complaints remain significant regardless of the day-to-day associations between the variables, we included the autoregressive parameter in each model. More specifically, outcome variables were also predicted by their respective values at previous time points (autoregressive parameter). This way, we aimed to rule out that the associations between night-time sleep and next day's complaints were not due to carryover effects of mental health complaints from day-to-day (i.e. mental health

complaints [day N-1] >>sleep [day N-1] >> mental complaints [day N]). We observed significant positive autocorrelation for psychotic-like experiences, rumination, and somatic complaints, suggesting that within-person increases / decreases in these aspects of mental health problems tend to carry over days. Furthermore, we detected that sleep duration had a significant negative autocorrelation, implicating that participants in the sample tended to catch up with sleep debt and to sleep less when they slept more the night before (Table 4). Importantly, sleep quality predicted next day's mental complaints (Table 3 and Figure 4) regardless of these carryover effects.

Discussion

The aim of our study was to prospectively investigate the associations between subjective sleep quality and psychological health in the context of home confinement due to the COVID-19 pandemic. More specifically, 166 individuals from three different countries (out of 717 respondents in a cross-sectional survey) filled in daily reports during two consecutive weeks. We focused our analyses on the associations at the between-individual level, as well as on the bidirectional temporal links between day-to-day variations of sleep quality and daytime rumination, psychotic-like experiences, and somatic complaints within individuals. Our findings indicate that disrupted sleep during the assessment period was associated with more negative psychological conditions such as increased rumination, more psychotic-like experiences, and somatic complaints resembling the most common symptoms of the coronavirus. Furthermore, day-to-day fluctuations covaried within individuals: a relatively poorer night of sleep predicted increased rumination, psychotic-like experiences, and somatic complaints the following day. This association appeared to be mainly unidirectional, since daytime reports of such mental experiences were not significantly associated with poor sleep quality on the following night.

A growing number of studies have reported an alarming increase in the prevalence of mental health complaints during the COVID-19 pandemic^{9,10,14,68,69}. The cross-sectional findings in our samples are in line with these first cross-sectional observations indicating clinically relevant signs of depression and posttraumatic symptomatology in approximately 20 % of our respondents. Likewise, impaired sleep quality exhibited moderate associations with retrospectively assessed psychopathological measures^{3,13,68}

such as depression, posttraumatic symptoms, and cognitive disorganization. Since our aim was to include only healthy participants free from severe psychological conditions in our prospective study, we excluded individuals showing clinically relevant signs of depressive symptoms. Nevertheless, we retained and included in our models the scores of PTSD-like symptoms and cognitive disorganization as proxies of psychopathological conditions that were consistently linked to impaired sleep quality^{70–73}, negative emotionality and reduced resilience^{52–55}. This way, by controlling the effects of the levels of more general psychopathological traits, we could disentangle the associations of sleep quality with daytime reports that reflect specific mental experiences such as rumination, psychotic-like experiences, and somatic complaints during the confinement.

To evaluate if the perceived circumstances of the pandemic and the confinement influenced our variables of interest, we examined whether the country-specific and global number of deaths, as well as the time spent confined at home were predictive of daily measures of mental health problems. Country-specific, daily numbers of deaths related to COVID-19 were predictive of more psychotic-like experiences and somatic complaints during the same day, and poorer sleep quality the following night. As for the worldwide daily number of deaths, a less general pattern was observed. There was a positive link with more somatic complaints (the same day) and longer sleep duration the following night. Beyond the associations with COVID-19-related number of deaths, daily variations in rumination, psychotic-like experiences and somatic complaints were related to the time spent in confinement. On the one hand, we highlight a general improvement in daytime mental health complaints with days elapsed from the introduction of the confinement, but a quadratic (U-shaped) relationship was also observed, indicating that negative psychological states seem to reappear with prolonged confinement. Although we abstain from drawing conclusions regarding the causal relationship of death rates and confinement days with daytime mental health problems, our results suggest that day-to-day variations of negative mental experiences were not independent of the context of the confinement and the pervasive information about the negative consequences of the COVID-19. Previous studies indicate that social media exposure⁷⁴ and ‘local’ COVID-19 death counts¹⁵ during the outbreak are risk factors for mental health problems. Our findings are in line with these reports and

extend these observations by evidencing a link between death rates and mental health complaints on a day-to-day basis. Nevertheless, we should note that we did not assess whether our participants were aware of the daily reports of COVID-19 death counts, nor did we measure the amount of time individuals spent focusing on the media coverage of the pandemic. Future studies should therefore investigate these factors in more detail to provide more insights into the links between media use, perceived threat, and mental complaints. The gradual amelioration of mental health complaints as a function of time elapsed since the introduction of the confinement is in line with a previous study showing a reduction of the negative psychological impact of the pandemic four weeks after its initial outbreak⁷⁵; however, it is premature to evaluate the long-lasting psychological impact of the confinement based on these findings. Although the number of our observations were relatively lower at later time points (>60 days after the introduction of the confinement) these data indicate that a further prolongation of the confinement period could be associated with negative psychological outcomes⁶.

Our results unambiguously indicate that poor subjective sleep quality during the two-week assessment period was associated with increased rumination, psychotic-like experiences and somatic complaints about the most typical symptoms of the coronavirus. That is, individuals who exhibited poor subjective sleep quality on average were also more likely to exhibit negative psychological outcomes during the confinement. The outbreak of the pandemic and the extreme circumstances produced by the confinement seem to have had a profound negative impact on subjective sleep quality, and sleep problems consistently correlated with impaired mental health^{3,13,16,76}. Our findings based on the prospective assessment of sleep quality and mental health indices corroborate these previous results as well as the well-established role of sleep in emotional adaptation^{21,24,77}. Furthermore, our data indicate that sleep disruption was associated with rumination, psychotic-like experiences and somatic complaints over and above the influence of psychopathological traits (PTSD-like symptoms and cognitive disorganization) as well as inter-and intra-individual variations in daily mood. This suggests that the association of sleep quality with more specific mental experiences during the confinement are not merely attributable to general levels of psychopathology and negative affect. At variance with subjective sleep quality, we did not observe similar links between sleep duration and daytime mental health problems. Whereas sleep

deprivation and sleep restriction have been consistently associated with increased negative affect⁷⁷, pain sensitivity⁷⁸, and psychotic-like phenomena^{18,45}, links between individual differences in sleep duration and negative health outcomes have only been reported in much larger samples and specifically in the case of extremely short and long sleep durations^{79,80}. Moreover, studies suggest that home confinement provided more freedom to schedule bed-and wake-up times leading to an increase in the time spent in bed^{16,81}. Time in bed however does not necessarily correlate with sleep duration, and what is more, it may reduce the perceived quality of sleep, especially in those individuals who are vulnerable to sleep problems²⁵.

Our participants exhibited remarkable intra-individual variability in psychological measures and sleep quality during the two-week study period, allowing for the analyses of day-to-day associations between sleep and daytime mental experiences. Night-to-night variations in sleep quality predicted mental experiences the upcoming day, i.e., worse nights were predictive of increased rumination, psychotic-like experiences, and somatic complaints. Furthermore, the associations between sleep quality and next day's mental health did not appear to be confounded by carryover effects of mental health complaints between successive days. That is, although the daily reports of rumination, psychotic-like experiences, and somatic complaints were predicted by the same variables assessed the preceding day, these autocorrelations were independent of the influence of previous night's sleep quality.

Although the present study does not allow making inferences about the underlying mechanisms linking sleep and daytime mental health, disrupted sleep might facilitate rumination, PLEs, and somatic complaints through a variety of cognitive and affective processes. For instance, impaired sleep exerts a negative impact on prefrontal, and fronto-parietal networks underlying inhibition-related functions and cognitive flexibility at the behavioral level^{82,83}. These changes, in turn, may enhance ruminative, worrying tendencies and reduce the chance of considering alternative explanations. Furthermore, experimental evidence suggests that impaired and/or restricted sleep causes deficits in attention, oculomotor control and sensory gating that could in turn may cause disorganized thought and unusual perceptual experiences that are characteristic of psychotic-like states^{84–86}. In addition, impaired fronto-limbic connectivity due to non-efficient sleep might provide the neural background of

increased emotional reactivity to stressful situations, including lowered pain-thresholds and somatic symptoms^{22,50}.

Noticeably, temporal associations between sleep and daytime mental health complaints were not consistent in the reverse direction. Simply put, worse days were not followed by worse nights. Such associations (i.e., daytime stress leading to sleep disruption the following night) have been reported in some studies^{38,87,88}, but others found only unidirectional links between sleep quality and next day's psychopathological outcomes^{32,89,90}. Although a bidirectional relationship between sleep and daytime mental health seems plausible⁷⁷, future studies and meta-analyses should corroborate if associations are present in both directions. Interestingly, days with more somatic complaints were followed by less disrupted sleep the following night, although the association was not significant after the correction for multiple comparisons. Although the interpretation of this finding remains elusive, we may speculate that somatic complaints increase fatigue and the homeostatic pressure for sleep. Since we restricted our analyses to individuals who did not self-report prior or current pathological conditions, or above-threshold levels of self-reported depressive states, we cannot here generalize our findings to high-risk or clinical populations, who arguably might be more vulnerable to the adverse effects of the pandemic on mental health. Future studies are needed to explore the potentially stronger and bidirectional temporal associations between sleep difficulties and mental complaints, in order to improve characterization of the need for sleep interventions in vulnerable populations.

The global atmosphere of anxiety and the unusual circumstances of home confinement after the outbreak of the COVID-19 imposed an overwhelming mental health burden on the population. Intrusive and recurrent thoughts, cognitive disorganization and unusual experiences, and dysfunctional anxiety about contracting the coronavirus were common experiences all over the globe. Our results are based on the daily experiences of participants living in European countries that differ in terms of cultural, economic, and political characteristics. The fact that we collected data collection in three different countries accentuates the robustness of our findings in different contexts, reducing the likelihood that country-specific differences in health care systems, media use,

governmental reactions, and other third variables might largely influence our main findings.

Our results indicate that restorative sleep could be an important factor to counteract the depletion of cognitive resources required for efficient emotional coping strategies during the challenging days of the confinement. Large-scale clinical trials indicate that digital interventions, such as online cognitive behavioral therapy for insomnia can effectively improve subjective sleep quality and attenuate mental health complaints^{91,92}. The home confinement highlighted the prominent role of online and/or application-based interventions aiming to improve public health during the pandemic⁹³, and our results call for further development of sleep quality-promoting strategies to help individuals to better cope with such stressful situations; however, the impact of such strategies in the context of COVID-19 remains to be ascertained.

Accepted Manuscript

Funding:



This project has received funding from the European Union's Horizon 2020 research and innovation programme under the Marie Skłodowska-Curie grant agreement No 801505.

The study was supported by the (Hungarian) National Research, Development and Innovation Office (NKFI/OTKA K 128599 and NKFI FK 128100; ELTE Thematic Excellence Programme 2020 TKP2020-IKA-05) and by the BME-Biotechnology FIKP grant of EMMI (BME FIKP-BIO).

Financial disclosure: NONE

Non-financial disclosure: The authors have no conflicts of interest to declare.

Methodological statement:

The methods were carried out in accordance with the relevant guidelines and regulations.

Open data and analysis scripts:

Anonymized data and analysis scripts can be found on the project's OSF page:

https://osf.io/xabwe/?view_only=f319528ac4c54e08bb041c788dcb6339

Acknowledgments

The authors thank Róbert Báthori who designed the user interface and layout and created the online platform for data collection.

References

1. Zhou F, Yu T, Du R, et al. Clinical course and risk factors for mortality of adult inpatients with COVID-19 in Wuhan, China: a retrospective cohort study. *The Lancet*. 2020;395(10229):1054-1062. doi:10.1016/S0140-6736(20)30566-3
2. Organization WH. Coronavirus disease 2019 (COVID-19): situation report, 72. Published online 2020.
3. Rajkumar RP. COVID-19 and mental health: A review of the existing literature. *Asian J Psychiatr*. 2020;52:102066. doi:10.1016/j.ajp.2020.102066
4. Duteil F, Mondillon L, Navel V. PTSD as the second tsunami of the SARS-Cov-2 pandemic. *Psychological Medicine*. Published online undefined/ed:1-2. doi:10.1017/S0033291720001336
5. Bavel JJV, Baicker K, Boggio PS, et al. Using social and behavioural science to support COVID-19 pandemic response. *Nature Human Behaviour*. 2020;4(5):460-471. doi:10.1038/s41562-020-0884-z
6. Brooks SK, Webster RK, Smith LE, et al. The psychological impact of quarantine and how to reduce it: rapid review of the evidence. *The Lancet*. Published online 2020.
7. Liu N, Zhang F, Wei C, et al. Prevalence and predictors of PTSS during COVID-19 outbreak in China hardest-hit areas: Gender differences matter. *Psychiatry research*. Published online 2020:112921.
8. Lai J, Ma S, Wang Y, et al. Factors Associated With Mental Health Outcomes Among Health Care Workers Exposed to Coronavirus Disease 2019. *JAMA Netw Open*. 2020;3(3):e203976-e203976. doi:10.1001/jamanetworkopen.2020.3976
9. Kaparounaki CK, Patsali ME, Mousa D-PV, Papadopoulou EV, Papadopoulou KK, Fountoulakis KN. University students' mental health amidst the COVID-19 quarantine in Greece. *Psychiatry Research*. Published online 2020:113111.
10. Odriozola-González P, Planchuelo-Gómez Á, Irurtia MJ, de Luis-García R. Psychological effects of the COVID-19 outbreak and lockdown among students and workers of a Spanish university. *Psychiatry Research*. Published online 2020:113108.
11. Zhao X, Lan M, Li H, Yang J. Perceived Stress and Sleep Quality Among the Non-diseased General Public in China During the 2019 Coronavirus Disease: A Moderated Mediation Model. *Sleep Medicine*. Published online 2020.
12. Wang C, Pan R, Wan X, et al. Immediate psychological responses and associated factors during the initial stage of the 2019 coronavirus disease (COVID-19) epidemic among the general population in China. *International journal of environmental research and public health*. 2020;17(5):1729.
13. Casagrande M, Favieri F, Tambelli R, Forte G. The enemy who sealed the world: Effects quarantine due to the COVID-19 on sleep quality, anxiety, and psychological distress in the Italian population. *Sleep Medicine*. Published online 2020.
14. Lin L, Wang J, Ou-yang X, et al. The immediate impact of the 2019 novel coronavirus (COVID-19) outbreak on subjective sleep status. *Sleep Medicine*. Published online 2020.

15. Zhang Y, Zhang H, Ma X, Di Q. Mental Health Problems during the COVID-19 Pandemics and the Mitigation Effects of Exercise: A Longitudinal Study of College Students in China. *International Journal of Environmental Research and Public Health*. 2020;17(10):3722.
16. Cellini N, Canale N, Mioni G, Costa S. Changes in sleep pattern, sense of time and digital media use during COVID-19 lockdown in Italy. *Journal of Sleep Research*. Published online 2020:e13074.
17. van Liempt S, van Zuiden M, Westenberg H, Super A, Vermetten E. Impact of impaired sleep on the development of PTSD symptoms in combat veterans: a prospective longitudinal cohort study. *Depress Anxiety*. 2013;30(5):469-474. doi:10.1002/da.22054
18. Barton J, Kyle SD, Varese F, Jones SH, Haddock G. Are sleep disturbances causally linked to the presence and severity of psychotic-like, dissociative and hypomanic experiences in non-clinical populations? A systematic review. *Neurosci Biobehav Rev*. 2018;89:119-131. doi:10.1016/j.neubiorev.2018.02.008
19. Baglioni C, Battagliese G, Feige B, et al. Insomnia as a predictor of depression: a meta-analytic evaluation of longitudinal epidemiological studies. *Journal of affective disorders*. 2011;135(1-3):10-19.
20. Freeman D, Sheaves B, Waite F, Harvey AG, Harrison PJ. Sleep disturbance and psychiatric disorders. *The Lancet Psychiatry*. 2020;7(7):628-637. doi:10.1016/S2215-0366(20)30136-X
21. Walker MP, van der Helm E. Overnight therapy? The role of sleep in emotional brain processing. *Psychol Bull*. 2009;135(5):731-748. doi:10.1037/a0016570
22. Simon EB, Rossi A, Harvey AG, Walker MP. Overanxious and underslept. *Nature Human Behaviour*. Published online November 4, 2019:1-11. doi:10.1038/s41562-019-0754-8
23. Wassing R, Lakbila-Kamal O, Ramautar JR, Stoffers D, Schalkwijk F, Van Someren EJW. Restless REM Sleep Impedes Overnight Amygdala Adaptation. *Curr Biol*. 2019;29(14):2351-2358.e4. doi:10.1016/j.cub.2019.06.034
24. Deliens G, Gilson M, Peigneux P. Sleep and the processing of emotions. *Exp Brain Res*. 2014;232(5):1403-1414. doi:10.1007/s00221-014-3832-1
25. Altena E, Baglioni C, Espie CA, et al. Dealing with sleep problems during home confinement due to the COVID-19 outbreak: Practical recommendations from a task force of the European CBT-I Academy. *Journal of Sleep Research*. Published online 2020:e13052.
26. Babkoff H, Weller A, Lavidor M. A comparison of prospective and retrospective assessments of sleep. *Journal of Clinical Epidemiology*. 1996;49(4):455-460. doi:10.1016/0895-4356(95)00529-3
27. Sato H, Kawahara J. Selective bias in retrospective self-reports of negative mood states. *Anxiety, Stress, & Coping*. 2011;24(4):359-367. doi:10.1080/10615806.2010.543132
28. Schroeder DH, Costa PT. Influence of life event stress on physical illness: Substantive effects or methodological flaws? *Journal of Personality and Social Psychology*. 1984;46(4):853-863. doi:10.1037/0022-3514.46.4.853
29. Solhan MB, Trull TJ, Jahng S, Wood PK. Clinical assessment of affective instability: Comparing EMA indices, questionnaire reports, and retrospective recall. *Psychological Assessment*. 2009;21(3):425-436. doi:10.1037/a0016869

30. Kasanova Z, Hajdúk M, Thewissen V, Myin-Germeys I. Temporal associations between sleep quality and paranoia across the paranoia continuum: An experience sampling study. *Journal of Abnormal Psychology*. 2020;129(1):122-130. doi:10.1037/abn0000453
31. Hennig T, Lincoln TM. Sleeping Paranoia Away? An Actigraphy and Experience-Sampling Study with Adolescents. *Child Psychiatry Hum Dev*. 2018;49(1):63-72. doi:10.1007/s10578-017-0729-9
32. Simor P, Krietsch KN, Köteles F, McCrae CS. Day-to-day variation of subjective sleep quality and emotional states among healthy university students—a 1-week prospective study. *International journal of behavioral medicine*. 2015;22(5):625-634.
33. Kramer I, Simons CJP, Wigman JTW, et al. Time-Lagged Moment-to-Moment Interplay Between Negative Affect and Paranoia: New Insights in the Affective Pathway to Psychosis. *Schizophr Bull*. 2014;40(2):278-286. doi:10.1093/schbul/sbs194
34. Fleeson W. Situation-Based Contingencies Underlying Trait-Content Manifestation in Behavior. *Journal of Personality*. 2007;75(4):825-862. doi:10.1111/j.1467-6494.2007.00458.x
35. Nolen-Hoeksema S, Wisco BE, Lyubomirsky S. Rethinking Rumination: *Perspectives on Psychological Science*. Published online September 1, 2008. Accessed June 16, 2020. <https://journals.sagepub.com/doi/10.1111/j.1745-6924.2008.00088.x>
36. Nolen-Hoeksema S, Watkins ER. A Heuristic for Developing Transdiagnostic Models of Psychopathology: Explaining Multifinality and Divergent Trajectories. *Perspectives on Psychological Science*. Published online October 14, 2011. doi:10.1177/1745691611419672
37. Kocsel N, Köteles F, Szemenyei E, Szabó E, Galambos A, Kökönyei G. The association between perseverative cognition and resting heart rate variability: A focus on state ruminative thoughts. *Biological Psychology*. 2019;145:124-133. doi:10.1016/j.biopsycho.2019.04.004
38. Pillai V, Steenburg LA, Ciesla JA, Roth T, Drake CL. A seven day actigraphy-based study of rumination and sleep disturbance among young adults with depressive symptoms. *Journal of Psychosomatic Research*. 2014;77(1):70-75. doi:10.1016/j.jpsychores.2014.05.004
39. Vanderhasselt M-A, Brose A, Koster EHW, De Raedt R. Co-variation between stressful events and rumination predicts depressive symptoms: An eighteen months prospective design in undergraduates. *Behaviour Research and Therapy*. 2016;87:128-133. doi:10.1016/j.brat.2016.09.003
40. Freeman D. Persecutory delusions: a cognitive perspective on understanding and treatment. *The Lancet Psychiatry*. 2016;3(7):685-692. doi:10.1016/S2215-0366(16)00066-3
41. van Os J, Linscott RJ, Myin-Germeys I, Delespaul P, Krabbendam L. A systematic review and meta-analysis of the psychosis continuum: evidence for a psychosis proneness-persistence-impairment model of psychotic disorder. *Psychol Med*. 2009;39(2):179-195. doi:10.1017/S0033291708003814
42. Cristóbal-Narváez P, Sheinbaum T, Myin-Germeys I, et al. The role of stress-regulation genes in moderating the association of stress and daily-life psychotic experiences. *Acta Psychiatr Scand*. 2017;136(4):389-399. doi:10.1111/acps.12789
43. Simor P, Báthori N, Nagy T, Polner B. Poor sleep quality predicts psychotic-like symptoms: an experience sampling study in young adults with schizotypal traits. *Acta Psychiatrica Scandinavica*. 2019;140(2):135-146. doi:10.1111/acps.13064

44. Collip D, Nicolson NA, Lardinois M, Lataster T, Os J van, Myin-Germeys I. Daily cortisol, stress reactivity and psychotic experiences in individuals at above average genetic risk for psychosis. *Psychological Medicine*. 2011;41(11):2305-2315. doi:10.1017/S0033291711000602
45. Reeve S, Emsley R, Sheaves B, Freeman D. Disrupting Sleep: The Effects of Sleep Loss on Psychotic Experiences Tested in an Experimental Study With Mediation Analysis. *Schizophr Bull*. 2018;44(3):662-671. doi:10.1093/schbul/sbx103
46. Reininghaus UA, Morgan C, Simpson J, et al. Unemployment, social isolation, achievement-expectation mismatch and psychosis: findings from the ÆSOP Study. *Soc Psychiat Epidemiol*. 2008;43(9):743-751. doi:10.1007/s00127-008-0359-4
47. Rekhi G, Rapisarda A, Lee J. Impact of distress related to attenuated psychotic symptoms in individuals at ultra high risk of psychosis: Findings from the Longitudinal Youth at Risk Study. *Early Intervention in Psychiatry*. 2019;13(1):73-78. doi:https://doi.org/10.1111/eip.12451
48. Lee SA, Jobe MC, Mathis AA. Mental health characteristics associated with dysfunctional coronavirus anxiety. *Psychol Med*. Published online April 16, 2020:1-2. doi:10.1017/S003329172000121X
49. Kroenke K, Spitzer RL, Williams JB. The PHQ-15: validity of a new measure for evaluating the severity of somatic symptoms. *Psychosomatic medicine*. 2002;64(2):258-266.
50. Finan PH, Goodin BR, Smith MT. The Association of Sleep and Pain: An Update and a Path Forward. *The Journal of Pain*. 2013;14(12):1539-1552. doi:10.1016/j.jpain.2013.08.007
51. Buchanan Diana Taibi, Cain Kevin, Heitkemper Margaret, et al. Sleep Measures Predict Next-Day Symptoms in Women with Irritable Bowel Syndrome. *Journal of Clinical Sleep Medicine*. 10(09):1003-1009. doi:10.5664/jcsm.4038
52. DiCorcia JA, Tronick E. Quotidian resilience: Exploring mechanisms that drive resilience from a perspective of everyday stress and coping. *Neuroscience & Biobehavioral Reviews*. 2011;35(7):1593-1602. doi:10.1016/j.neubiorev.2011.04.008
53. CICCHETTI D. Resilience under conditions of extreme stress: a multilevel perspective. *World Psychiatry*. 2010;9(3):145-154.
54. Polner B, Faiola E, Urquijo MF, et al. The network structure of schizotypy in the general population. *Eur Arch Psychiatry Clin Neurosci*. Published online October 23, 2019. doi:10.1007/s00406-019-01078-x
55. Grant P, Hennig J. Schizotypy, social stress and the emergence of psychotic-like states - A case for benign schizotypy? *Schizophrenia Research*. 2020;216:435-442. doi:10.1016/j.schres.2019.10.052
56. Buysse DJ, Reynolds CF, Monk TH, Berman SR, Kupfer DJ. The Pittsburgh Sleep Quality Index: a new instrument for psychiatric practice and research. *Psychiatry Res*. 1989;28(2):193-213.
57. Beck AT, Beck RW. Screening Depressed Patients in Family Practice. *Postgraduate Medicine*. 1972;52(6):81-85. doi:10.1080/00325481.1972.11713319
58. Mason O, Linney Y, Claridge G. Short scales for measuring schizotypy. *Schizophrenia research*. 2005;78(2-3):293-296.
59. Blevins CA, Weathers FW, Davis MT, Witte TK, Domino JL. The posttraumatic stress disorder checklist for DSM-5 (PCL-5): Development and initial psychometric evaluation. *Journal of Traumatic Stress*. 2015;28(6):489-498.

60. McCubbin JA, Zinzow HM, Hibdon MA, et al. Subclinical Posttraumatic Stress Disorder Symptoms: Relationships with Blood Pressure, Hostility, and Sleep. *Cardiovasc Psychiatry Neurol*. 2016;2016. doi:10.1155/2016/4720941
61. Meijman TF, de Vries-Griever AH, De Vries G, Kampman R. The evaluation of the Groningen sleep quality scale. *Groningen: Heymans Bulletin (HB 88-13-EX)*. 1988;2006.
62. Simor P, Köteles F, Bódizs R, Bárdos G. A questionnaire based study of subjective sleep quality: the psychometric evaluation of the Hungarian version of the Groningen Sleep Quality Scale. *Mentálhigiéné és Pszichoszomatika*. 2009;10(3):249-261.
63. Mason OJ, Morgan CJM, Stefanovic A, Curran HV. The psychotomimetic states inventory (PSI): measuring psychotic-type experiences from ketamine and cannabis. *Schizophr Res*. 2008;103(1-3):138-142. doi:10.1016/j.schres.2008.02.020
64. Bates D, Mächler M, Bolker B, Walker S. Fitting Linear Mixed-Effects Models Using lme4. *Journal of Statistical Software*. 2015;67(1):1-48. doi:10.18637/jss.v067.i01
65. Wang LP, Maxwell SE. On disaggregating between-person and within-person effects with longitudinal data using multilevel models. *Psychological methods*. 2015;20(1):63.
66. Benjamini Y, Hochberg Y. Controlling the False Discovery Rate: A Practical and Powerful Approach to Multiple Testing. *Journal of the Royal Statistical Society Series B (Methodological)*. 1995;57(1):289-300.
67. Furlanetto LM, Mendlowicz MV, Bueno JR. The validity of the Beck Depression Inventory-Short Form as a screening and diagnostic instrument for moderate and severe depression in medical inpatients. *Journal of affective disorders*. 2005;86(1):87-91.
68. Huang Y, Zhao N. Generalized anxiety disorder, depressive symptoms and sleep quality during COVID-19 outbreak in China: a web-based cross-sectional survey. *Psychiatry Research*. 2020;288:112954. doi:10.1016/j.psychres.2020.112954
69. Kwong ASF, Pearson RM, Adams MJ, et al. Mental health during the COVID-19 pandemic in two longitudinal UK population cohorts. *medRxiv*. Published online June 18, 2020:2020.06.16.20133116. doi:10.1101/2020.06.16.20133116
70. Tempesta D, Curcio G, De Gennaro L, Ferrara M. Long-term impact of earthquakes on sleep quality. *PLoS ONE*. 2013;8(2):e55936. doi:10.1371/journal.pone.0055936
71. Charuvastra A, Cloitre M. Safe enough to sleep: sleep disruptions associated with trauma, posttraumatic stress, and anxiety in children and adolescents. *Child and Adolescent Psychiatric Clinics of North America*. 2009;18(4):877-891.
72. Ross RJ, Ball WA, Sullivan KA, Caroff SN. Sleep disturbance as the hallmark of posttraumatic stress disorder. *Am J Psychiatry*. 1989;146(6):697-707. doi:10.1176/ajp.146.6.697
73. Reeve S, Sheaves B, Freeman D. The role of sleep dysfunction in the occurrence of delusions and hallucinations: A systematic review. *Clin Psychol Rev*. 2015;42:96-115. doi:10.1016/j.cpr.2015.09.001
74. Gao J, Zheng P, Jia Y, et al. Mental health problems and social media exposure during COVID-19 outbreak. *Plos one*. 2020;15(4):e0231924.
75. Wang C, Pan R, Wan X, et al. A longitudinal study on the mental health of general population during the COVID-19 epidemic in China. *Brain, behavior, and immunity*. Published online 2020.

76. Li D-J, Ko N-Y, Chen Y-L, et al. Covid-19-related factors associated with sleep disturbance and suicidal thoughts among the Taiwanese public: a facebook survey. *International journal of environmental research and public health*. 2020;17(12):4479.
77. Simon EB, Vallat R, Barnes CM, Walker MP. Sleep Loss and the Socio-Emotional Brain. *Trends in Cognitive Sciences*. Published online 2020.
78. Schripf M, Liegl G, Boeckle M, Leitner A, Geisler P, Pieh C. The effect of sleep deprivation on pain perception in healthy subjects: a meta-analysis. *Sleep Medicine*. 2015;16(11):1313-1320. doi:10.1016/j.sleep.2015.07.022
79. Cappuccio FP, D'Elia L, Strazzullo P, Miller MA. Sleep Duration and All-Cause Mortality: A Systematic Review and Meta-Analysis of Prospective Studies. *Sleep*. 2010;33(5):585-592. doi:10.1093/sleep/33.5.585
80. Itani O, Jike M, Watanabe N, Kaneita Y. Short sleep duration and health outcomes: a systematic review, meta-analysis, and meta-regression. *Sleep Medicine*. 2017;32:246-256. doi:10.1016/j.sleep.2016.08.006
81. Marelli S, Castelnuovo A, Somma A, et al. Impact of COVID-19 lockdown on sleep quality in university students and administration staff. *Journal of Neurology*. Published online 2020:1-8.
82. Killgore WDS. Effects of sleep deprivation on cognition. *Prog Brain Res*. 2010;185:105-129. doi:10.1016/B978-0-444-53702-7.00007-5
83. Nishida M, Kikuchi S, Matsumoto K, Yamauchi Y, Saito H, Suda S. Sleep complaints are associated with reduced left prefrontal activation during a verbal fluency task in patients with major depression: A multi-channel near-infrared spectroscopy study. *Journal of Affective Disorders*. 2017;207:102-109. doi:10.1016/j.jad.2016.09.028
84. Andrillon T, Windt J, Silk T, Drummond SPA, Bellgrove MA, Tsuchiya N. Does the Mind Wander When the Brain Takes a Break? Local Sleep in Wakefulness, Attentional Lapses and Mind-Wandering. *Frontiers in Neuroscience*. 2019;13:949. doi:10.3389/fnins.2019.00949
85. Petrovsky N, Ettinger U, Hill A, et al. Sleep deprivation disrupts prepulse inhibition and induces psychosis-like symptoms in healthy humans. *J Neurosci*. 2014;34(27):9134-9140. doi:10.1523/JNEUROSCI.0904-14.2014
86. Meyhöfer I, Steffens M, Faiola E, Kasparbauer A-M, Kumari V, Ettinger U. Combining two model systems of psychosis: The effects of schizotypy and sleep deprivation on oculomotor control and psychotomimetic states. *Psychophysiology*. 2017;54(11):1755-1769. doi:10.1111/psyp.12917
87. Akerstedt T, Orsini N, Petersen H, Axelsson J, Lekander M, Kecklund G. Predicting sleep quality from stress and prior sleep—a study of day-to-day covariation across six weeks. *Sleep medicine*. 2012;13(6):674-679.
88. Doane LD, Thurston EC. Associations among sleep, daily experiences, and loneliness in adolescence: Evidence of moderating and bidirectional pathways. *Journal of Adolescence*. 2014;37(2):145-154. doi:10.1016/j.adolescence.2013.11.009
89. Bouwmans MEJ, Bos EH, Hoenders HJR, Oldehinkel AJ, de Jonge P. Sleep quality predicts positive and negative affect but not vice versa. An electronic diary study in depressed and healthy individuals. *Journal of Affective Disorders*. 2017;207:260-267. doi:10.1016/j.jad.2016.09.046

90. Galambos NL, Vargas Lascano DI, Howard AL, Maggs JL. Who sleeps best? Longitudinal patterns and covariates of change in sleep quantity, quality, and timing across four university years. *Behavioral Sleep Medicine*. 2013;11(1):8-22.
91. Espie CA, Emsley R, Kyle SD, et al. Effect of Digital Cognitive Behavioral Therapy for Insomnia on Health, Psychological Well-being, and Sleep-Related Quality of Life: A Randomized Clinical Trial. *JAMA psychiatry*. 2019;76(1):21-30. doi:10.1001/jamapsychiatry.2018.2745
92. Freeman D, Sheaves B, Goodwin GM, et al. The effects of improving sleep on mental health (OASIS): a randomised controlled trial with mediation analysis. *Lancet Psychiatry*. 2017;4(10):749-758. doi:10.1016/S2215-0366(17)30328-0
93. Zhou X, Snoswell CL, Harding LE, et al. The Role of Telehealth in Reducing the Mental Health Burden from COVID-19. *Telemedicine and e-Health*. 2020;26(4):377-379. doi:10.1089/tmj.2020.0068

Accepted Manuscript

Figure Captions

Figure 1. The plot shows the progress - confirmed cases and deaths - of the COVID-19 pandemic in three European countries. Dashed lines show the introduction of specific countermeasures. The blue line segment shows when the data collection took place. Data from: Hale, Thomas, Sam Webster, Anna Petherick, Toby Phillips, and Beatriz Kira (2020). Oxford COVID-19 Government Response Tracker, Blavatnik School of Government. <https://covidtracker.bsg.ox.ac.uk/>

Figure 2. Cross-sectional survey. Pearson's correlation coefficients between the assessed variables among the Belgian, Hungarian, and Spanish sample of respondents (N = 717). The colors and numbers indicate Pearson's r- values, asterisks correspond to False Discovery Rate (FDR) corrected p-values (*** p < 0.001, ** p < 0.01, * p < 0.05). Stress: the increase of school-and job-related stress due to the confinement; Disorg: Cognitive Disorganization; PSQI: the sleep disturbances subscale of the Pittsburgh Sleep Quality Inventory; BDI: Beck Depression Inventory; PCL: Posttraumatic stress disorder checklist.

Figure 3. Mental health in the context of the confinement. Associations between the number of COVID-19-related deaths at the country level (linear, shown on the x-axis in figures in the top row) and days since the introduction of confinement (quadratic, shown on the x-axis in figures in the bottom row) with daytime functioning, sleep disruption, and sleep quality. Daily reports of COVID-19 deaths were predictive of increased negative mood, more psychotic-like experiences, and somatic complaints during the day, and worse subjective sleep quality the following night. Daily reports of rumination, psychotic-like experiences, and somatic symptoms decreased as time elapsed since the introduction of the confinement, but we also observed a quadratic effect indicating that the amelioration of mental health exhibited a slowing trend. In the plots, each point represents the average of the given measure for a day within a country and the trend lines are weighted for the number of observations for the given day in a country. Shades show 95% confidence intervals. Note that confidence intervals become wider due to a lower number of observations around later time points after the introduction of the confinement.

Figure 4. Prospective data analyses. *Left column:* Individual differences in subjective sleep disruption are associated with increased rumination, psychotic-like experiences, and somatic complaints during the two-week study period. The scatterplots of the left column represent the two-week averages of sleep disruption (x-axes) and daytime experiences (y-axes). Points with brighter and darker colors indicate positive and negative ratings of mood, respectively. Note that the brighter colored points (reflecting more positive mood) are more prominent in case of lower rumination, psychotic-like experiences, and somatic symptoms. *Right column:* Day-to-day associations between subjective sleep disruption and next day's rumination, psychotic-like experiences, and

somatic complaints. Subjective sleep disruption as compared to the individual two-weekly averages, that is, relatively worse nights of sleep during the study period are associated with increased rumination, psychotic-like experiences, and somatic complaints the following day. Grey lines indicate the regression slopes of each individual fitted to their day-to-day reports of sleep quality and daytime experiences (individual means and slopes). The red lines show the regression slopes fitted to all data points (overall mean and slope). Points with brighter and darker colors indicate positive and negative ratings of mood respectively. As indicated by the color of the data points, more positive daily mood is associated with lower rumination, psychotic-like experiences, and somatic symptoms (See Table 2).

Accepted Manuscript

	Belgium	Spain	Hungary	Total
<i>Cross-sectional sample</i>				
Country % of cross-sectional sample (N)	31.2% (229)	40.5% (297)	28.2% (207)	100% (733)
<i>Gender</i>				
Female % (N)	77.7% (178)	68.0% (202)	85.0% (176)	75.9% (556)
Male % (N)	21.8% (50)	31.3% (93)	15.0% (31)	23.7% (174)
<i>Education</i>				
Less than a high school diploma % (N)	2.6% (6)	2.4% (7)	0.5% (1)	1.9% (14)
High school degree or equivalent % (N)	20.1% (46)	12.8% (38)	69.6% (144)	31.1% (228)
Bachelor's degree % (N)	34.5% (79)	33.7% (100)	26.1% (54)	31.8% (233)
Master's degree % (N)	34.5% (79)	36.4% (108)	1.0% (2)	25.8% (189)
Doctorate (PhD) % (N)	6.6% (15)	4.7% (14)	0.0% (0)	4.0% (29)

Mean age (SD)	28.2 (9.8)	32.8 (11.2)	22.8 (3.9)	28.5 (10.1)
Mean stress (SD)	19.2 (15.4)	15.9 (14.7)	22.2 (17.0)	18.7 (15.8)
Mean BDI (SD)	5.8 (5.5)	5.0 (4.6)	5.7 (5.0)	5.4 (5.0)
Mean Disorganization (SD)	4.8 (3.2)	3.7 (2.8)	5.1 (3.1)	4.4 (3.1)
Mean PSQI (SD)	0.6 (0.4)	0.6 (0.4)	0.6 (0.4)	0.6 (0.4)
<i>Exclusions</i>				
Excluded for COVID-19 diagnosis	0.4% (1)	4.0% (12)	0.0% (0)	1.8% (13)
Chose not to participate in the prospective study % (N)	74.2% (170)	79.8% (237)	63.3% (131)	73.4% (538)
Excluded for low compliance % (N)	0.9% (2)	7.4% (22)	2.4% (5)	3.9% (29)
<i>Final sample (Prospective phase)</i>				
Country % of final sample (N)	34.3% (57)	22.9% (38)	42.8% (71)	100.0% (166)
<i>Gender</i>				
Female % (N)	82.5% (47)	68.4% (26)	76.1% (54)	76.5% (127)
Male % (N)	15.8% (9)	26.3% (10)	19.7% (14)	19.9% (33)

Mean age (SD)	25.8 (6.9)	31.9 (10.1)	23.1 (4.2)	26.0 (7.6)
Mean stress (SD)	15.2 (12.5)	12.9 (9.8)	13.4 (11.3)	13.9 (11.4)
Mean BDI (SD)	3.1 (2.6)	2.6 (2.4)	2.8 (2.5)	2.9 (2.5)
Mean Disorganization (SD)	4.7 (3.1)	3.0 (2.0)	4.3 (2.6)	4.1 (2.7)
Mean PSQI (SD)	0.6 (0.3)	0.4 (0.3)	0.5 (0.3)	0.5 (0.3)

Table 1. Descriptive statistics of the study sample. The cross-sectional sample was used to select participants for the prospective, two-week long study. Disorganization was assessed by the Disorganization subscale of the O-LIFE (Oxford-Liverpool Inventory of Feelings and Experiences) questionnaire, BDI refer to Beck Depression Inventory, PSQI to the Pittsburg Sleep Quality Scale.

Predicting daytime mental health complaints and sleep quality from COVID-19-related variables

Predictors	Rumination		Psychotic-like experiences		Somatic complaints		Sleep disruption		Sleep duration	
	Estimates	95% CI	Estimates	95% CI	Estimates	95% CI	Estimates	95% CI	Estimates	95% CI
Intercept	0.804 ***	0.410 – 1.198	0.876 ***	0.441 – 1.312	0.395 *	0.047 – 0.744	0.454 *	0.103 – 0.805	7.512 ***	6.368 – 8.657
Age	0.004	-0.001 – 0.010	0.002	-0.005 – 0.008	-0.003	-0.008 – 0.002	0.004	-0.000 – 0.008	-0.027 ***	-0.041 – -0.014
Gender (male)	-0.099 *	-0.185 – -0.013	-0.075	-0.182 – 0.033	-0.150 ***	-0.236 – -0.065	-0.083 *	-0.155 – -0.012	-0.412 ***	-0.633 – -0.191
PTSD-like symptoms	0.008 ***	0.005 – 0.011	0.011 ***	0.007 – 0.015	0.008 ***	0.005 – 0.011	0.003 *	0.001 – 0.006	0.004	-0.004 – 0.013
Cognitive Disorganisation	0.024 **	0.010 – 0.039	0.037 ***	0.019 – 0.054	0.029 ***	0.015 – 0.043	0.020 **	0.008 – 0.032	-0.033	-0.070 – 0.004
<u>Deaths related to COVID-19 (in country, 10/day)</u>	<u>0.001</u>	<u>-0.002 – 0.003</u>	<u>0.003 *</u>	<u>0.000 – 0.006</u>	<u>0.005 ***</u>	<u>0.003 – 0.007</u>	<u>0.003 **</u>	<u>0.001 – 0.005</u>	<u>0.003</u>	<u>-0.004 – 0.009</u>
<u>Deaths related to COVID-19 (global, 1000/day)</u>	<u>0.004</u>	<u>-0.009 – 0.018</u>	<u>0.008</u>	<u>-0.007 – 0.022</u>	<u>0.016 **</u>	<u>0.004 – 0.028</u>	<u>-0.010</u>	<u>-0.024 – 0.004</u>	<u>0.054 *</u>	<u>0.008 – 0.100</u>
<u>Weeks spent in confinement (linear)</u>	<u>-0.234 ***</u>	<u>-0.356 – -0.112</u>	<u>-0.251 ***</u>	<u>-0.383 – -0.119</u>	<u>-0.080</u>	<u>-0.186 – 0.025</u>	<u>-0.056</u>	<u>-0.165 – 0.053</u>	<u>0.366 *</u>	<u>0.009 – 0.723</u>
<u>Weeks spent in confinement (quadratic)</u>	<u>0.017 **</u>	<u>0.006 – 0.027</u>	<u>0.016 **</u>	<u>0.005 – 0.028</u>	<u>0.006</u>	<u>-0.004 – 0.015</u>	<u>0.003</u>	<u>-0.006 – 0.013</u>	<u>-0.030</u>	<u>-0.061 – 0.001</u>
Autocorrelation	0.013 ***	0.007 – 0.019	0.004 *	0.001 – 0.008	0.002	-0.004 – 0.007	-0.004	-0.010 – 0.001	-0.063 **	-0.109 – -0.017
Random Effects										
σ^2	0.0760		0.0860		0.0526		0.0932		1.0140	

τ_{00}	0.0431 _{id}	0.0709 _{id}	0.0420 _{id}	0.0280 _{id}	0.2566 _{id}
ICC	0.3618	0.4520	0.4441	0.2308	0.2019
N	165 _{id}	165 _{id}	157 _{id}	166 _{id}	166 _{id}
Observations	1590	1590	1517	1928	1927
Marginal R ² / Conditional R ²	0.161 / 0.464	0.223 / 0.574	0.255 / 0.586	0.064 / 0.280	0.059 / 0.249

* $p < 0.05$ ** $p < 0.01$ *** $p < 0.001$

Table 2. The association of the number of deaths related to COVID-19 and of the days spent in confinement with mental health complaints, beyond the effects of age, gender, PTSD-like symptoms and cognitive disorganization. The variables reflecting the context of the pandemic are underlined, and significant associations between covid-related stressors and outcome measures are highlighted in bold. Daily reports of country-specific COVID-19 related deaths were associated with psychotic-like experiences, and somatic complaints during the day, and worse subjective sleep quality the following night. The number of global deaths predicted more somatic complaints during the day and prolonged sleep duration the following night. The time spent in confinement was inversely related to the reported levels of rumination and psychotic-like experiences and positively to sleep duration. A quadratic trend of the time spent in confinement was also observed on rumination and psychotic-like experiences, indicating that in spite of the gradual amelioration of daytime mental health complaints, prolonged time in confinement may again increase mental complaints. σ^2 : residual variance; τ_{00} : variance of random intercept; τ_{11} : variance of random slope; ρ_{01} : correlation between random intercept and slope; ICC: intraclass correlation; N: number of participants. Marginal R²: variance explained by fixed effects; Conditional R²: variance explained by fixed and random effects. P-values were computed with Satterthwaite's approximation.

Associations between sleep and mental health complaints the following day

<i>Predictors</i>	Rumination		Psychotic-like experiences		Somatic complaints	
	<i>Estimates</i>	<i>95% CI</i>	<i>Estimates</i>	<i>95% CI</i>	<i>Estimates</i>	<i>95% CI</i>
Intercept	0.411	-0.156 – 0.979	0.192	-0.485 – 0.869	0.301	-0.244 – 0.847
Age	0.000	-0.005 – 0.006	-0.003	-0.010 – 0.003	-0.004	-0.009 – 0.001
Gender (male)	-0.090	-0.181 – 0.001	-0.028	-0.136 – 0.081	-0.107 *	-0.195 – -0.018
PTSD-like symptoms	0.007 ***	0.004 – 0.010	0.009 ***	0.005 – 0.013	0.006 ***	0.003 – 0.009
Cognitive Disorganisation	0.020 **	0.005 – 0.034	0.030 **	0.012 – 0.047	0.023 **	0.009 – 0.037
Sleep disruption (within-person mean)	0.028 *	0.006 – 0.049	0.055 ***	0.029 – 0.081	0.057 ***	0.036 – 0.078
<u>Sleep disruption (within-person centered)</u>	<u>0.008 *</u>	<u>0.002 – 0.014</u>	<u>0.011 **</u>	<u>0.005 – 0.018</u>	<u>0.008 **</u>	<u>0.003 – 0.013</u>
Sleep duration (within-person mean)	-0.034	-0.094 – 0.026	-0.009	-0.081 – 0.063	-0.012	-0.069 – 0.045
<u>Sleep duration (within-person centered)</u>	<u>-0.008</u>	<u>-0.024 – 0.007</u>	<u>-0.001</u>	<u>-0.018 – 0.015</u>	<u>-0.007</u>	<u>-0.020 – 0.006</u>
Autocorrelation (dependent variable the day before, within-person centered)	0.016 ***	0.010 – 0.022	0.007 ***	0.004 – 0.011	0.006 *	0.000 – 0.012

Random Effects

σ^2	0.0754	0.0867	0.0539
τ_{00}	0.0416 _{id}	0.0628 _{id}	0.0382 _{id}
τ_{11}	0.0002 _{id.gsqs_sum_centered}	0.0002 _{id.gsqs_sum_centered}	
ρ_{01}	0.0438 _{id}	-0.3465 _{id}	
ICC	0.3644	0.4270	0.4146
N	165 _{id}	165 _{id}	157 _{id}
Observations	1524	1524	1454
Marginal R ² / Conditional R ²	0.165 / 0.469	0.244 / 0.567	0.281 / 0.579

* $p < 0.05$ ** $p < 0.01$ *** $p < 0.001$

Table 3. Summary of mixed models examining associations between sleep quality and subsequent daytime functioning. The day-to-day associations between sleep quality and daytime complaints are underlined. Uncorrected p-values were computed with Satterthwaite's approximation. Correction for multiple comparisons in case of the sleep-related predictors was addressed by the Benjamini-Hochberg procedure of False Discovery Rate (FDR)⁶⁶. The significant associations between sleep and next day's mental health complaints surviving statistical correction (FDR) are highlighted in bold. σ^2 : residual variance; τ_{00} : variance of random intercept; τ_{11} : variance of random slope; ρ_{01} : correlation between random intercept and slope; ICC: intraclass correlation; N: number of participants. Marginal R²: variance explained by fixed effects; Conditional R²: variance explained by fixed and random effects.

Associations between daytime mental health complaints and subsequent sleep quality

<i>Predictors</i>	Sleep disruption		Sleep duration	
	<i>Estimates</i>	<i>95% CI</i>	<i>Estimates</i>	<i>95% CI</i>
Intercept	0.366 **	0.122 – 0.610	8.548 ***	7.758 – 9.338
Age	0.005 *	0.001 – 0.009	-0.028 ***	-0.042 – -0.015
Gender (male)	-0.073	-0.147 – 0.002	-0.436 ***	-0.677 – -0.195
PTSD-like symptoms	-0.000	-0.003 – 0.003	0.006	-0.004 – 0.017
Cognitive Disorganisation	0.008	-0.005 – 0.021	-0.024	-0.066 – 0.017
Psychotic-like experiences (within-person mean)	0.005	-0.005 – 0.016	0.026	-0.008 – 0.059
<u>Psychotic-like experiences (within-person centered)</u>	<u>-0.001</u>	<u>-0.005 – 0.004</u>	<u>0.010</u>	<u>-0.006 – 0.025</u>
Rumination (within-person mean)	0.003	-0.017 – 0.023	-0.050	-0.113 – 0.014
<u>Rumination (within-person centered)</u>	<u>0.004</u>	<u>-0.004 – 0.012</u>	<u>-0.013</u>	<u>-0.038 – 0.013</u>
Somatic complaints (within-person mean)	0.019 **	0.005 – 0.034	-0.016	-0.062 – 0.030
<u>Somatic complaints (within-person centered)</u>	<u>-0.008 *</u>	<u>-0.016 – -0.000</u>	<u>0.009</u>	<u>-0.015 – 0.034</u>

Mood (within-person mean)	-0.029	-0.066 – 0.008	0.091	-0.028 – 0.211
<u>Mood (within-person centered)</u>	<u>-0.006</u>	<u>-0.020 – 0.007</u>	<u>-0.004</u>	<u>-0.047 – 0.038</u>
Autocorrelation (dependent variable the day before, within-person centered)	-0.004	-0.010 – 0.002	-0.052 *	-0.102 – -0.001
Random Effects				
σ^2	0.0928		0.9843	
τ_{00}	0.0247 _{id}		0.2567 _{id}	
ICC	0.2101		0.2069	
N	158 _{id}		158 _{id}	
Observations	1606		1605	
Marginal R ² / Conditional R ²	0.096 / 0.286		0.068 / 0.261	
* $p < 0.05$ ** $p < 0.01$ *** $p < 0.001$				

Table 4. Summary of mixed models examining associations between daytime functioning and subsequent (next night's) sleep quality and duration. The day-to-day associations between daytime mental health complaints and next night's sleep disruption are underlined. Uncorrected p-values were computed with Satterthwaite's approximation. None of the p-values corresponding to daytime mental health complaints remained significant after the statistical correction for multiple comparisons. From the examined measures, daytime somatic complaints predicted poorer sleep quality the following night. σ^2 : residual variance; τ_{00} : variance of random intercept; τ_{11} : variance of random slope; ρ_{01} : correlation between random intercept and slope; ICC: intraclass correlation; N: number of participants. Marginal R: variance explained by fixed effects; Conditional R: variance explained by fixed and random effects.

Figure 1

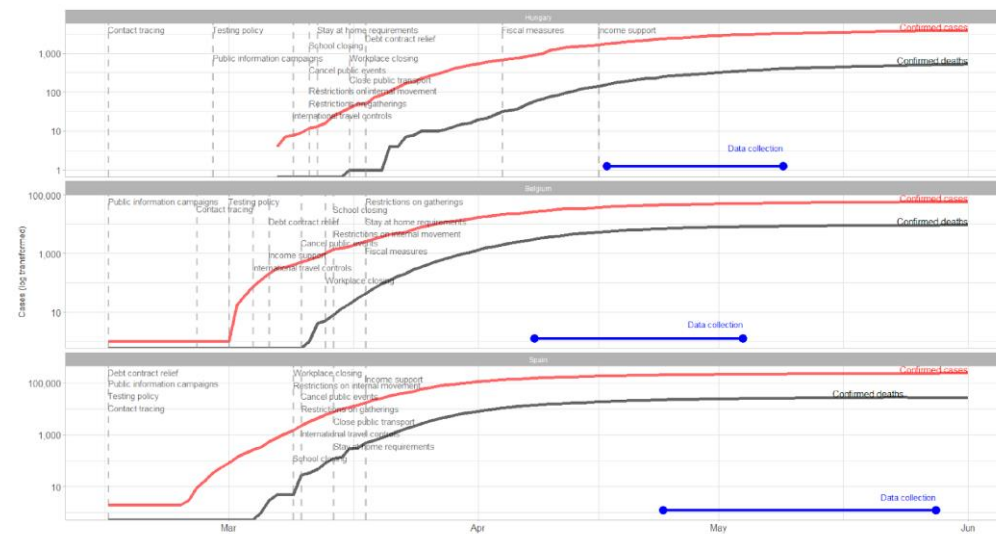


Figure 2

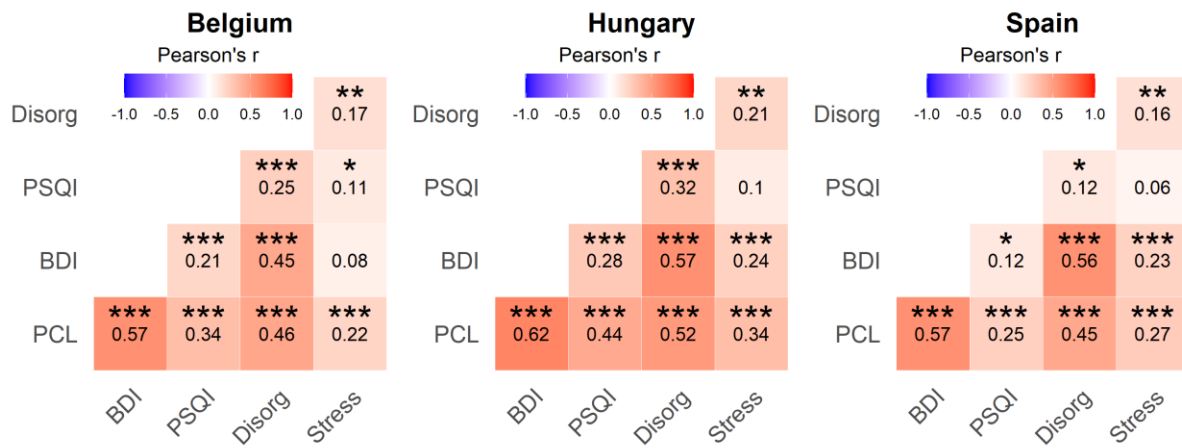


Figure 3

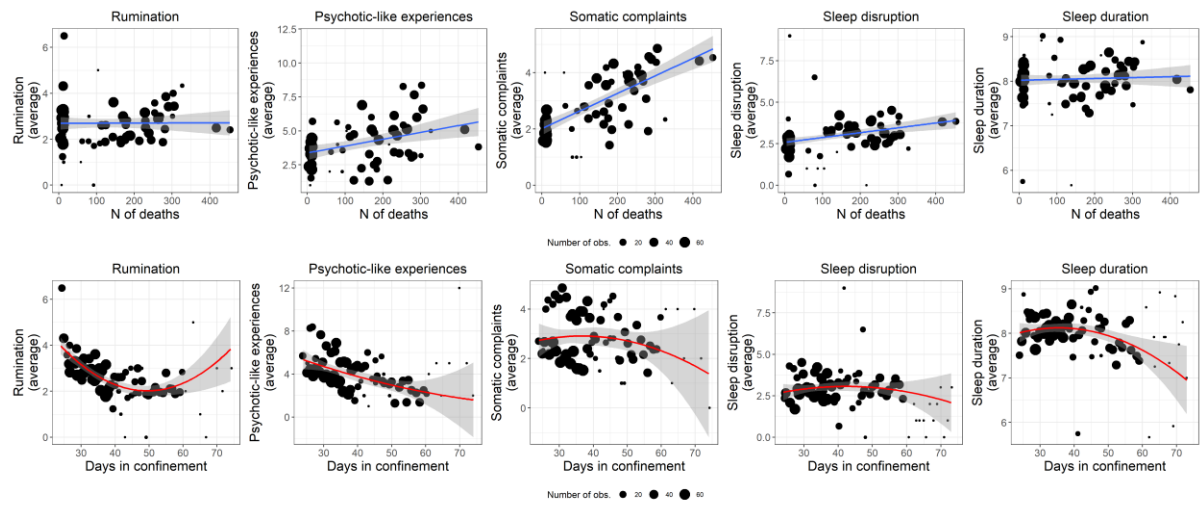
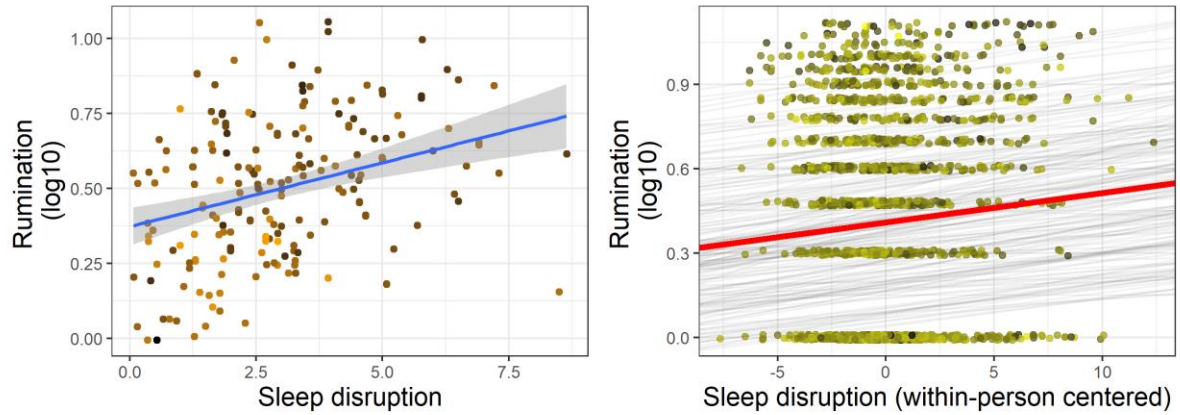


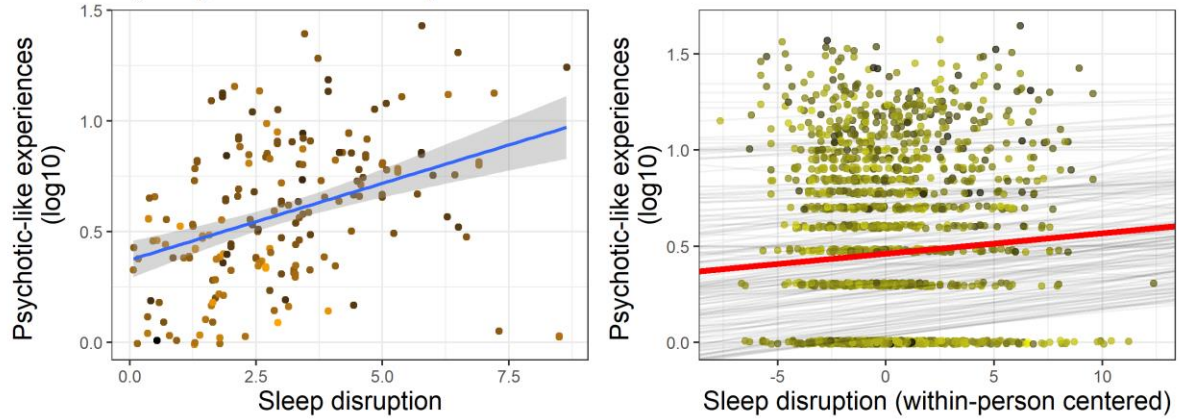
Figure 4

Between- and within-person associations between sleep disruption and daytime mental health problems

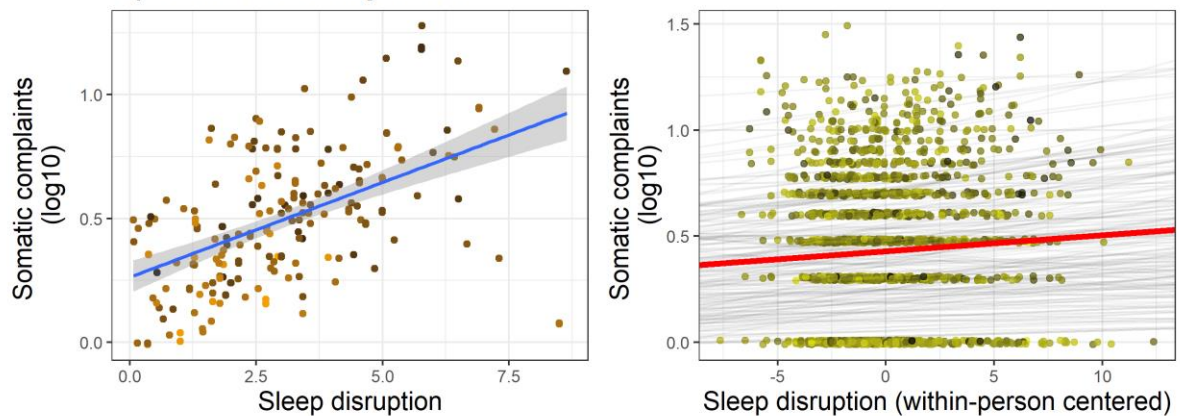
A) Rumination



B) Psychotic-like experiences



C) Somatic complaints



Positive mood
(within-person mean) 2 3 4 5 6

Positive mood
(within-person centered) -4 -2 0 2